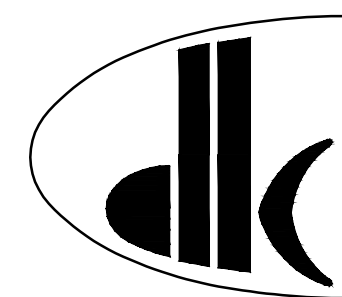


SUNSHINE COAST REGIONAL DISTRICT  
JERVIS INLET ROAD WATERMAIN EXTENSION

CONTRACT No. 09 103

*RECORD DRAWINGS*

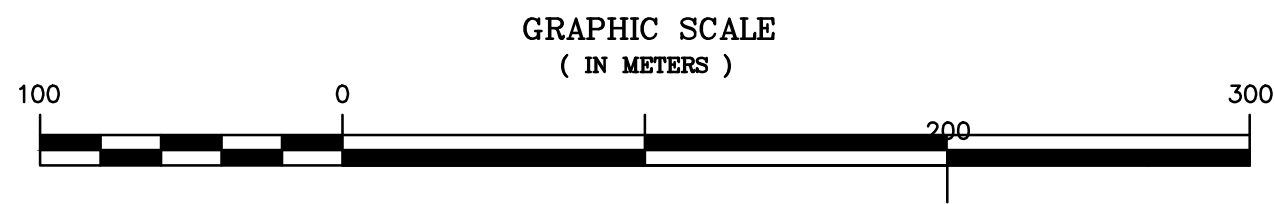


**Dayton & Knight Ltd.**

CONSULTING ENGINEERS

#210-889 HARBOURSIDE DR., NORTH VANCOUVER, B.C. V7P 3S1  
TEL: (604) 990-4800 FAX: (604) 990-4805 [www.dayton-knight.com](http://www.dayton-knight.com)

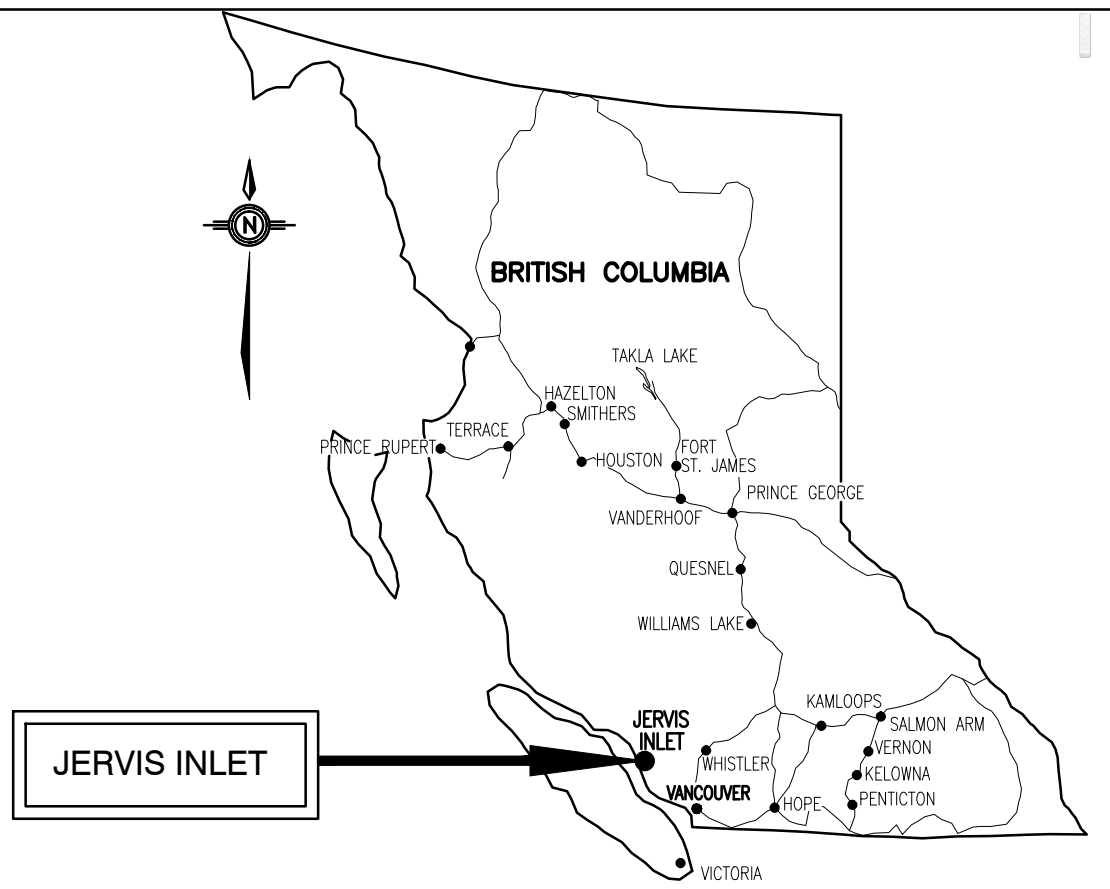
FILE: G:\Data CAD Drawings\USER\SERVER P Shiva\Readings\SUNSHINE COAST\28-199-1\REVISION 2\GENERAL\28-199-1 G1.dwg Tab G1 14-12-02 ver1.0



AREA PLAN

"These Record Drawings have been prepared based on information provided by the Contractor and others. Dayton & Knight Ltd. has not verified the accuracy or completeness of the information provided to them and does not warrant the accuracy or completeness of these Record Drawings. Users of these Record Drawings assume all risk of loss resulting from their use."

- NOTES :
1. DRAWING DATUM : EL. 100 = EL. 100 GEODETIC



KEY PLAN

INDEX TO DRAWINGS ( TOTAL DRAWINGS = 10)

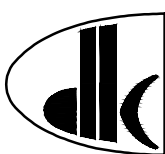
No.	TITLE
GENERAL	
G1	KEY PLAN - AREA PLAN - INDEX TO DRAWINGS
G2	CONNECTION DETAILS
G3	MISCELLANEOUS DETAILS
G4	DETAILS
G5	DETAILS
G6	DETAILS
PP1	PLAN AND PROFILE - STA. 0+000.0 TO 0+300.0
PP2	PLAN AND PROFILE - STA. 0+300.0 TO 0+600.0
PP3	PLAN AND PROFILE - STA. 0+600.0 TO 0+722.7
PP4	PLAN AND PROFILE - EARL'S COVE ROAD - STA. 0+000.0 TO 0+058.9

SUNSHINE COAST REGIONAL DISTRICT  
JERVIS INLET ROAD WATERMAIN EXTENSION

CONTRACT No. 09 103

PLOT: FULL 1:5 HALF 1:10

ISSUE	DATE	DRAWN	CHK'D	APP'D	DESCRIPTION	ISSUE	DATE	DRAWN	CHK'D	APP'D	DESCRIPTION	DESIGNED	AS/MC
A	FEB11/09	MC	CC		ISSUED FOR REVIEW	D	DEC04/09	A.S.	C.C.	C.C.	RECORD DRAWING	DRAWN	MC
B	MAR10/09	MC	CC	CC	ISSUED FOR TENDER	E	JUN11/14	M.C.	C.C.	C.C.	REVISED RECORD DRAWING	CHECKED	CC
C	APR30/09	MC	CC	CC	ISSUED FOR CONSTRUCTION								



**Dayton & Knight Ltd.**  
CONSULTING ENGINEERS  
#210-889 HARBOURSIDE DR., NORTH VANCOUVER, B.C. V7P 3S1  
TEL.: (604) 990-4800 FAX: (604) 990-4805 www.dayton-knight.com

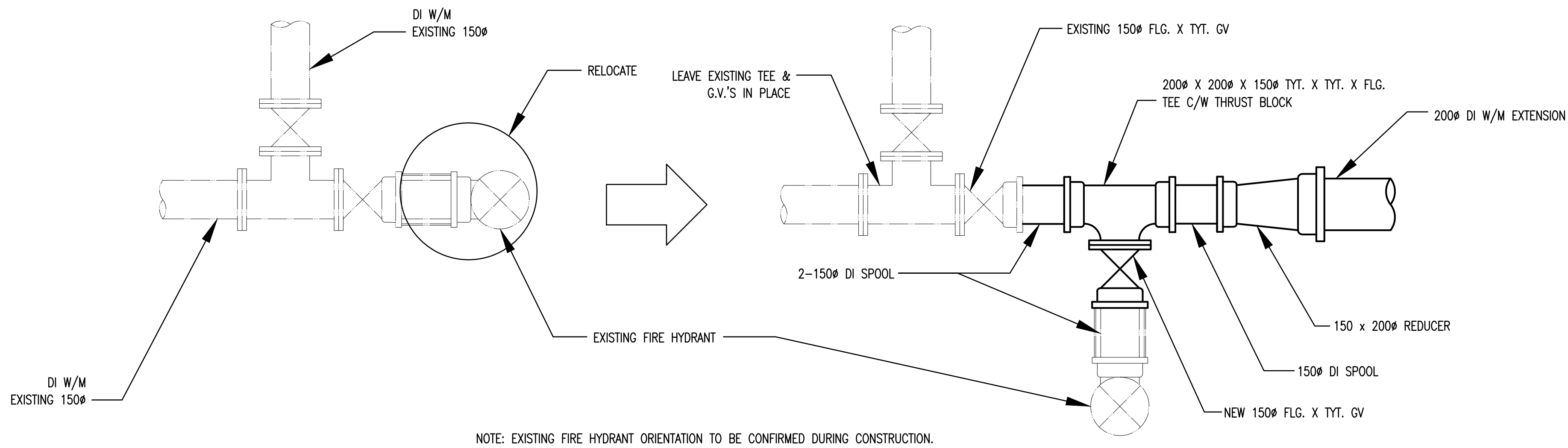
SUNSHINE COAST REGIONAL DISTRICT  
JERVIS INLET ROAD WATERMAIN EXTENSION  
KEY PLAN - AREA PLAN - INDEX TO DRAWINGS

SCALE: AS SHOWN

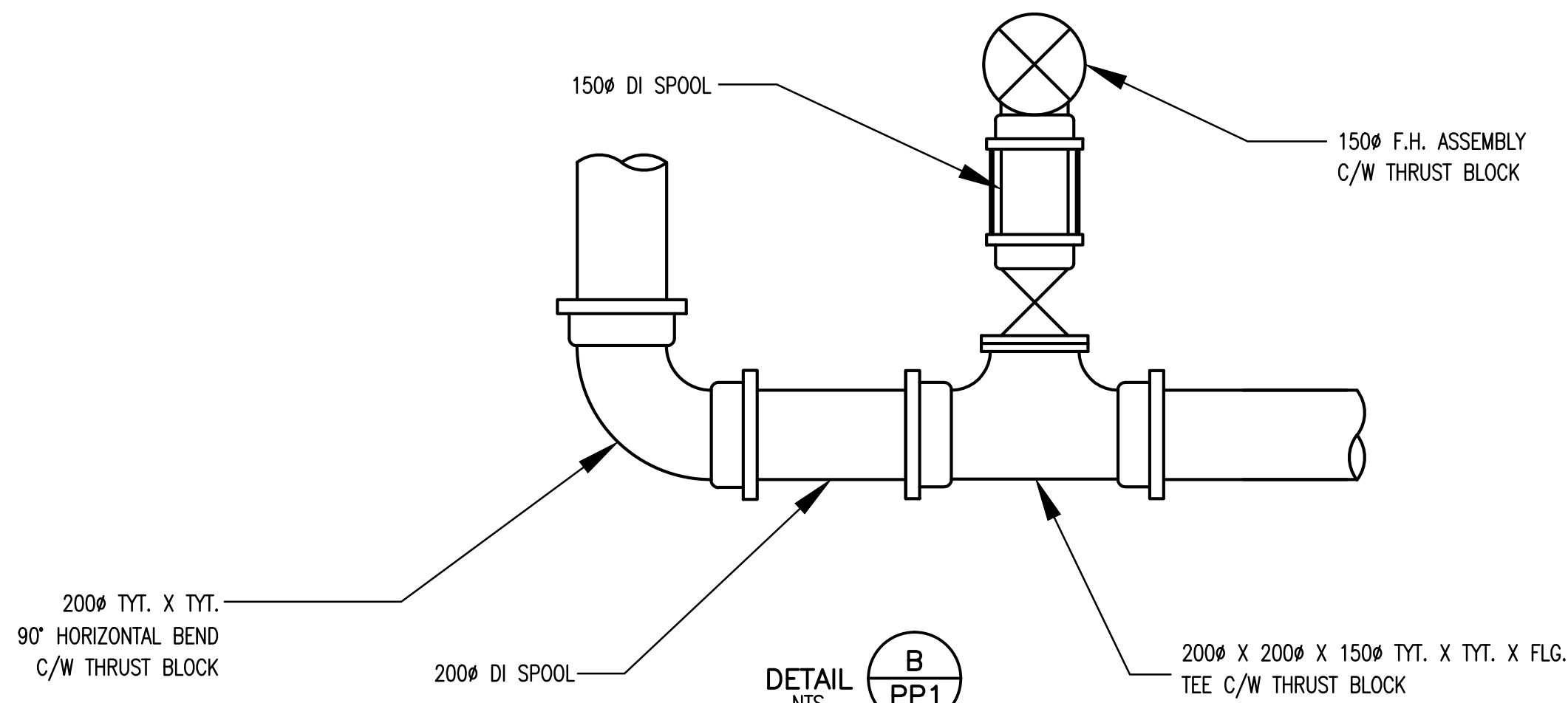
DRAWING No. 028.199.0001

SHEET No. G1 ISSUE E

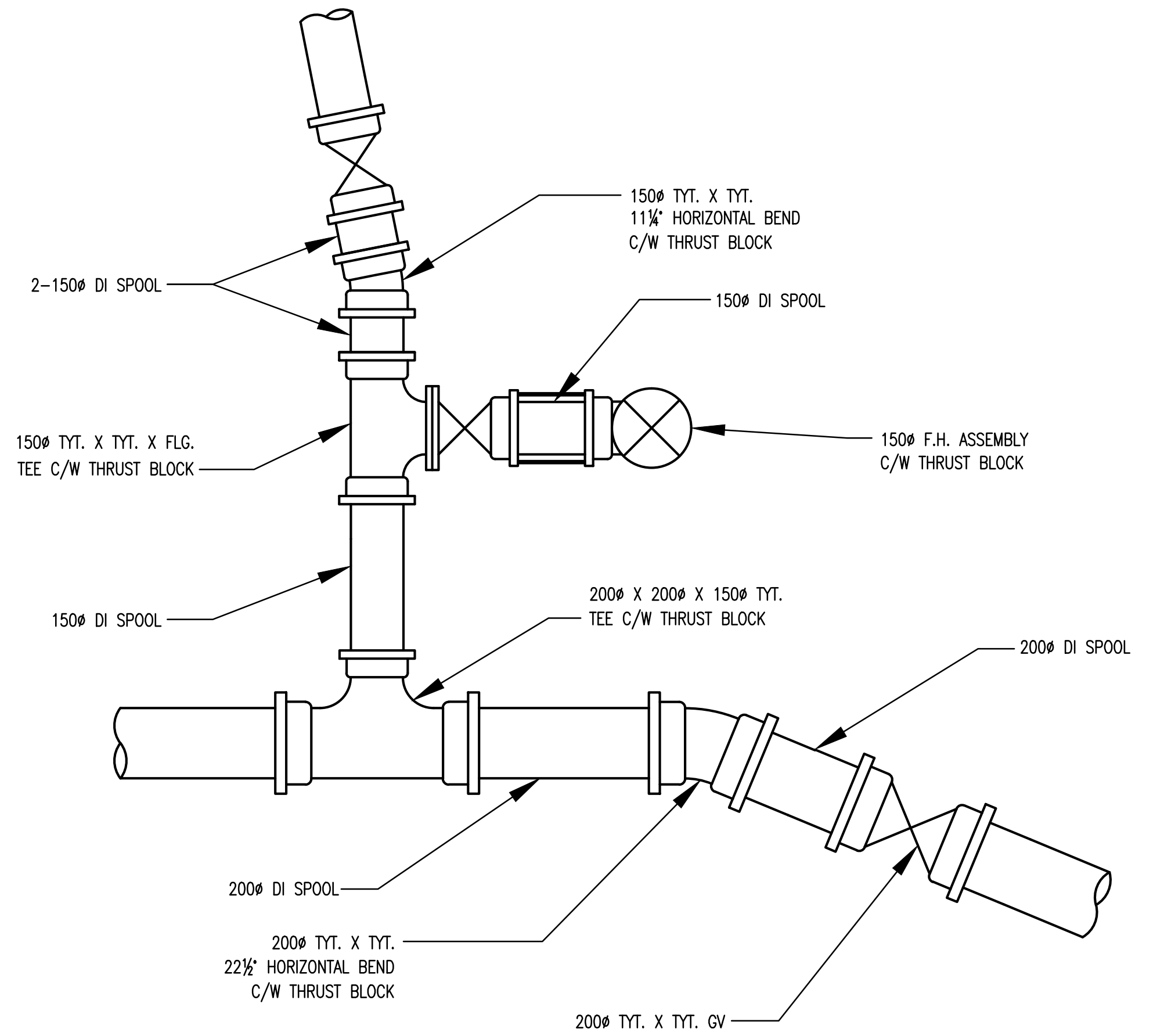
FILE: G:\Bak CAD Drawings\DWG\SERVER P Share\Readings\SUNSHINE COAST\28-199-1\REVISION 2\GENERAL\28-199-1 G2-3.dwg Tab G2 14-12-02 ver:1.0



DETAIL  
NTS  
A  
PP1



DETAIL  
NTS  
B  
PP1



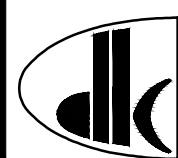
DETAIL  
NTS  
C  
PP1

"These Record Drawings have been prepared based on information provided by the Contractor and others. Dayton & Knight Ltd. has not verified the accuracy or completeness of the information provided to them and does not warrant the accuracy or completeness of these Record Drawings. Users of these Record Drawings assume all risk of loss resulting from their use."

PLOT: FULL 1:5 HALF 1:10

DRAWING	REVISIONS					REVISIONS					REVISIONS				
	ISSUE	DATE	DRAWN	CHK'D	APP'D	ISSUE	DATE	DRAWN	CHK'D	APP'D	ISSUE	DATE	DRAWN	CHK'D	APP'D
	A	FEB11/09	MC	CC		D	DEC04/09	A.S.	C.C.	C.C.					
	B	MAR10/09	MC	CC	CC	E	JUN11/14	M.C.	C.C.	C.C.					
	C	APR30/09	MC	CC	CC										

DESIGNED	AS/MC
DRAWN	MC
CHECKED	CC



**Dayton & Knight Ltd.**  
CONSULTING ENGINEERS  
#210-889 HARBOURSIDE DR., NORTH VANCOUVER, B.C. V7P 3S1  
TEL.: (604) 990-4800 FAX: (604) 990-4805 www.dayton-knight.com

SUNSHINE COAST REGIONAL DISTRICT  
JERVIS INLET ROAD WATERMAIN EXTENSION  
CONNECTION DETAILS

CONTRACT No. 09 103

SCALE: NTS		
DRAWING No. 028.199.0001		
SHEET No.	G2	ISSUE E



APPROXIMATE GROUND PROFILE

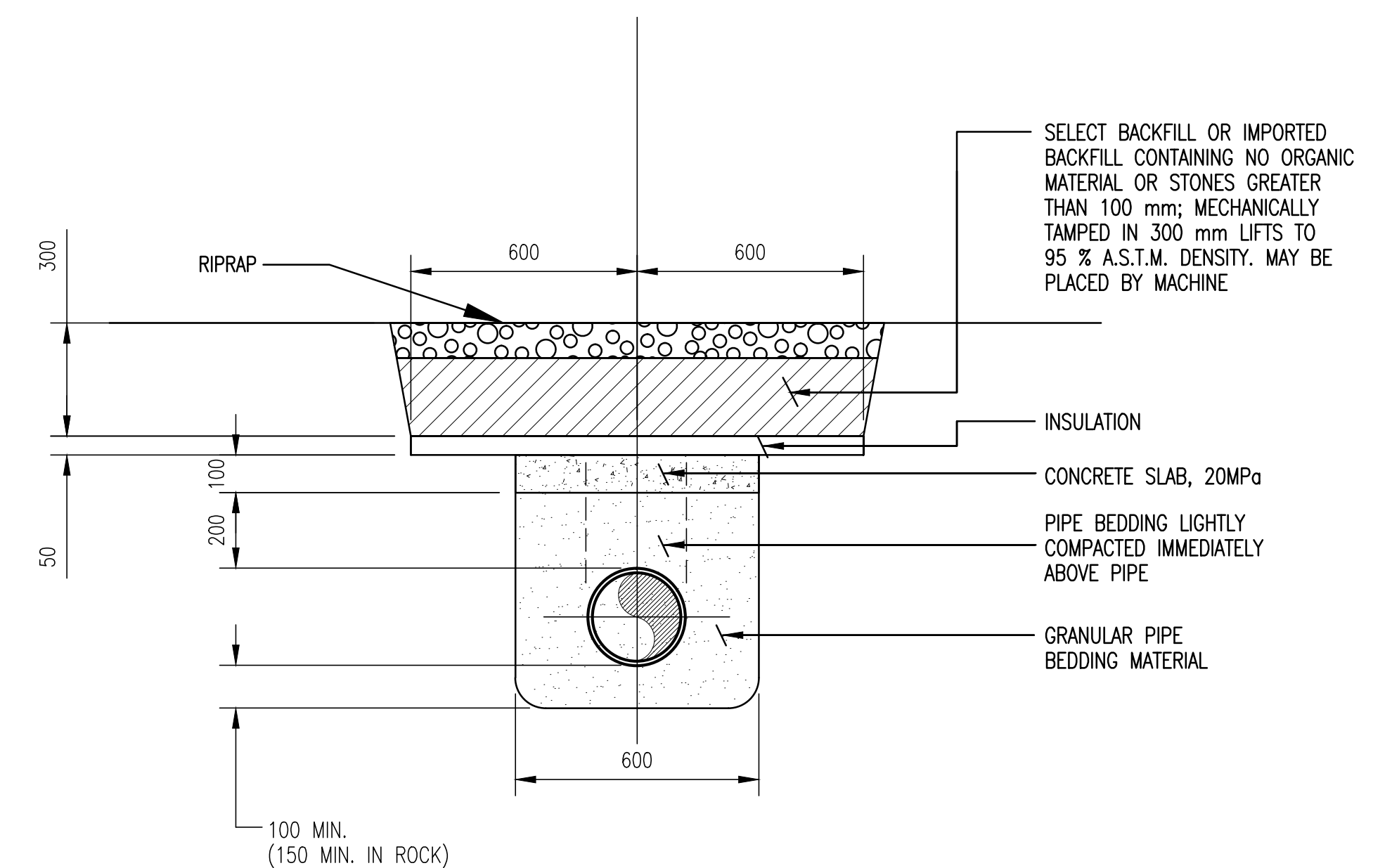
RIPRAP

1  
G3

2500

2500

The logo of the European Patent Office (EPO) is a circular emblem. It is divided horizontally by a line. The upper half contains the letter 'E' and the lower half contains the letters 'PP1'.



SECTION  
NTS

1  
G3

FILE: G:\D&K CAD Drawings\DKSERVER P Share\Recdwgs\SUNSHINE COAST\28-199-1\REVISION 2\GENERAL\28-199-1 G2-3.dwg Tab G3 14-12-02 vemic0

PLOT: FULL 1:5      HALF 1:10

DESIGNED AS/MC  
DRAWN MC  
CHECKED \_\_\_\_\_



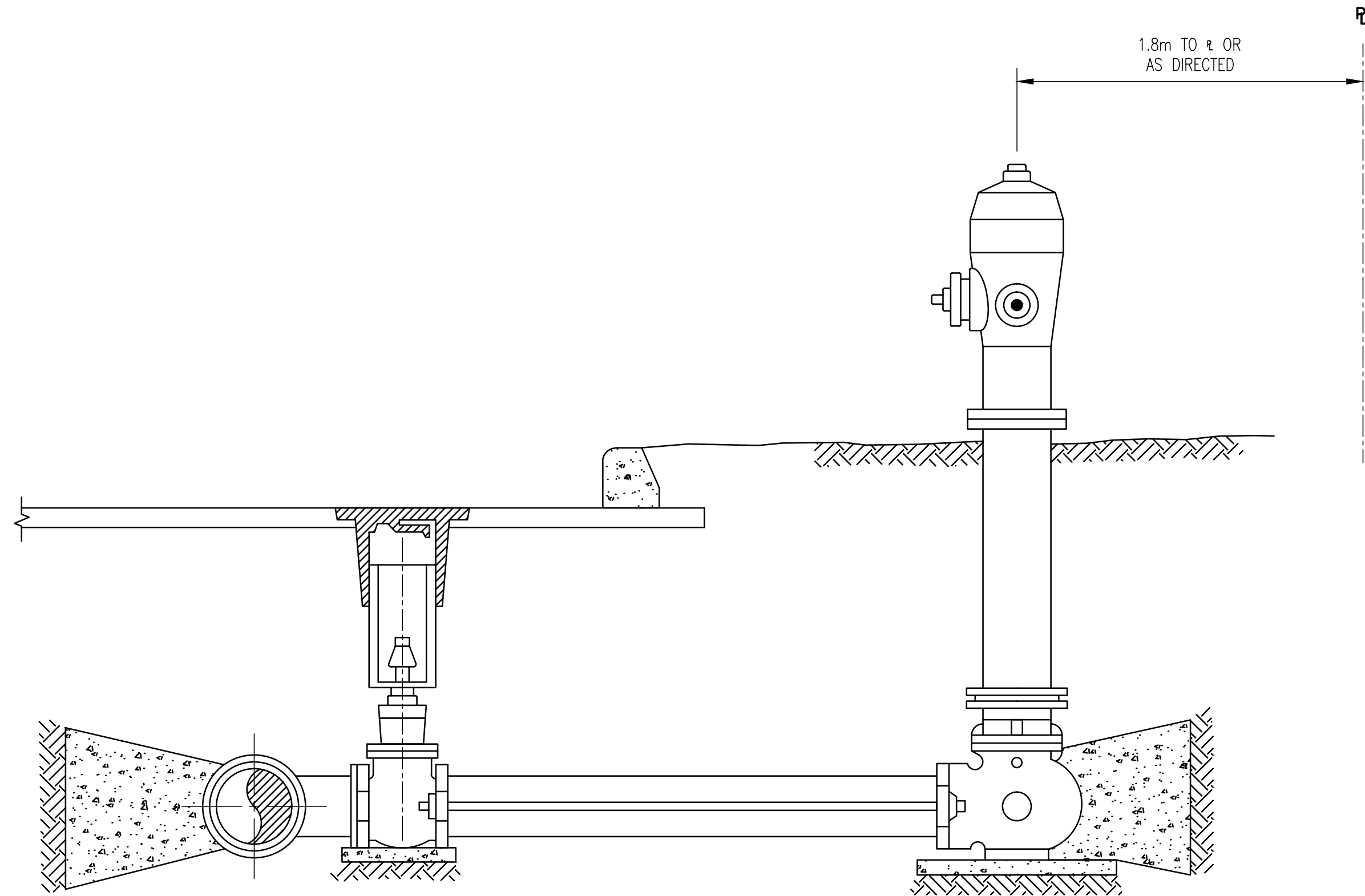
CONTRACT No. 09 103

SCALE: NTS

DRAWING No. 028.199.0001

SHEET No.	G3	ISSUE E
-----------	----	---------

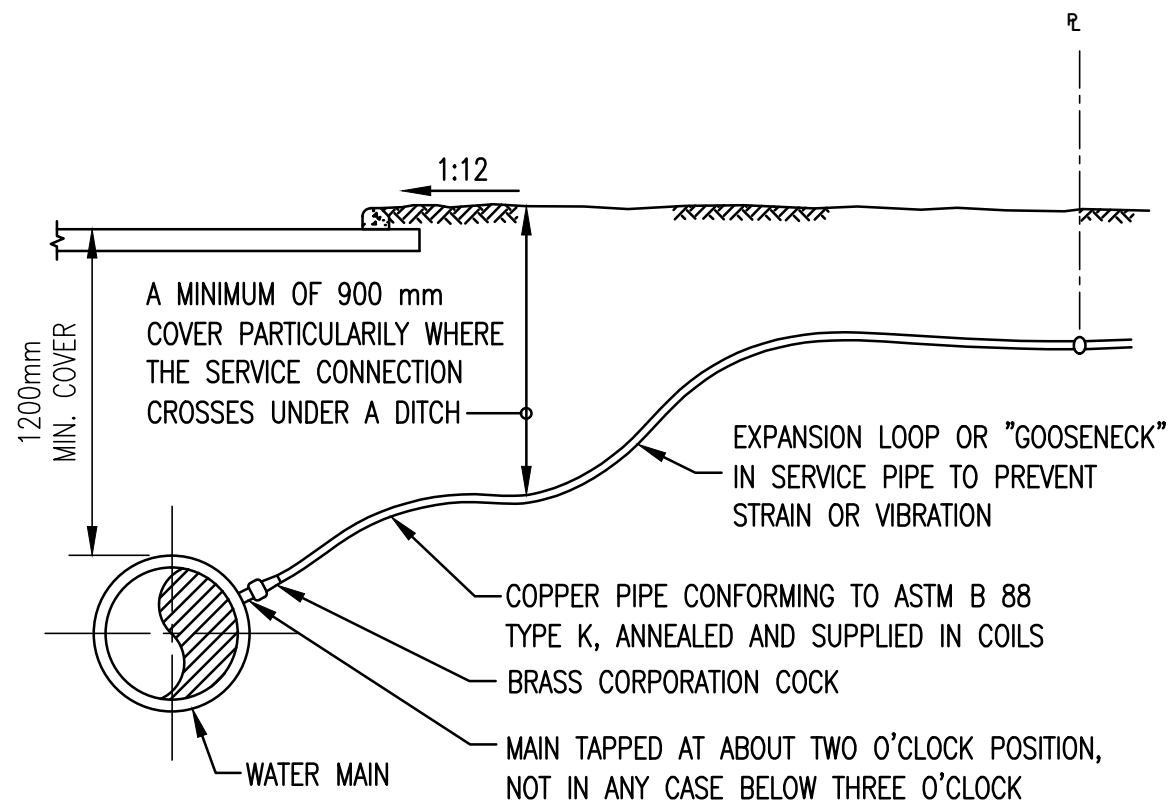
FILE: G:\Data CAD Drawings\DWGSERVER P Shire\Readings\SUNSHINE COAST\28-199-1\REVISION 2\GENERAL\28-199-1 G4-6.dwg Tab G4 14-12-02 ver:10



NOTES:

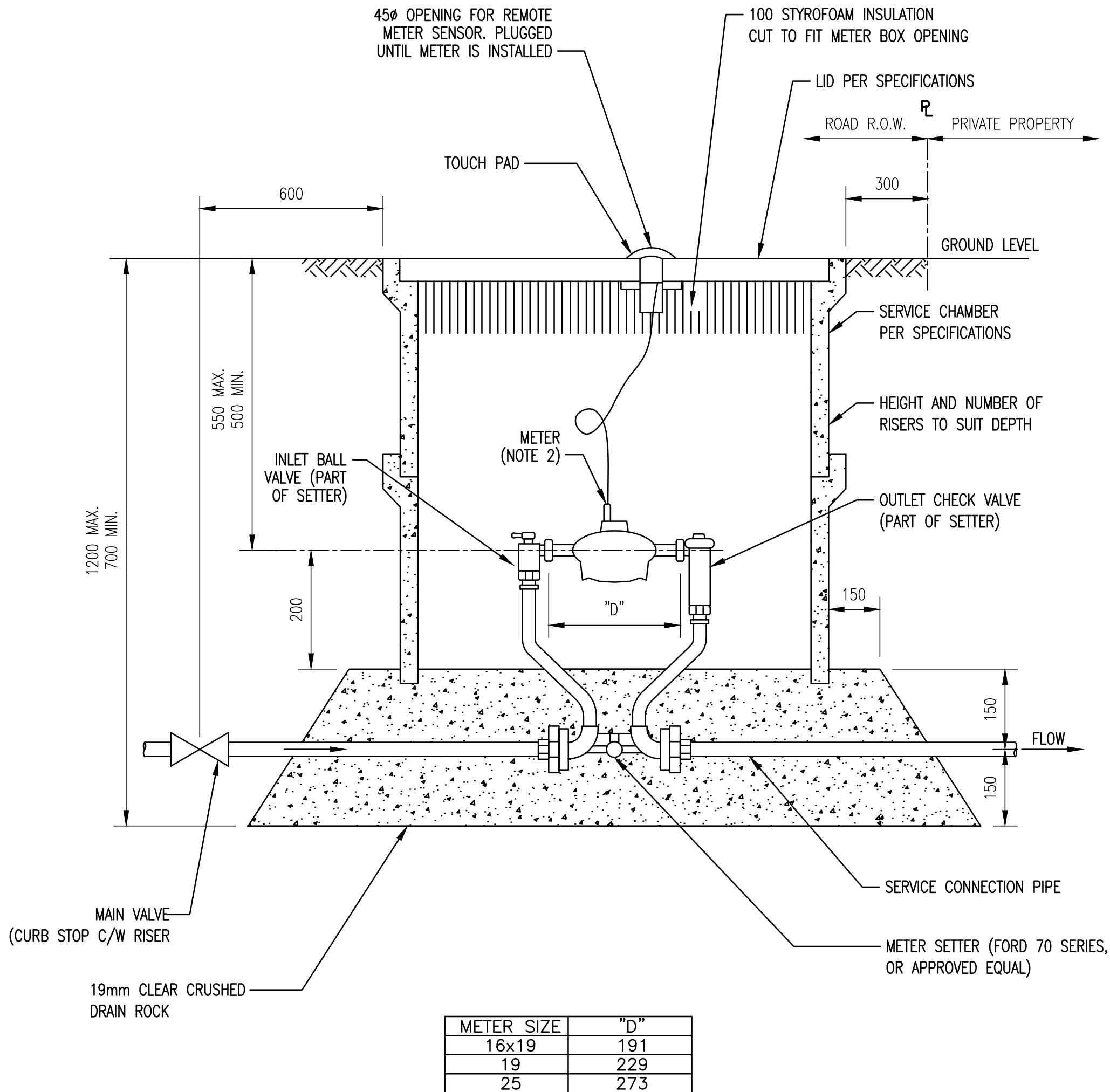
1. STANDARD HYDRANT WITH LUGS FOR TIE BACK RODS (TYPE T.C. 20P)
2. 0.45m DEEP X 0.61m DIA. CIRCLE (0.13m<sup>3</sup>) OF 40mm DRAIN ROCK TO SURROUND HYDRANT DRAIN
3. CONCRETE THRUST BLOCKS, SIZED AND PLACED AGAINST UNDISTURBED VERTICAL FACE. ENCLOSE FITTING IN POLY BEFORE POURING BLOCK
4. TEE AT WATERMAIN – BRANCH SIZE 150mm DIA., WITH LUGS FOR TIE BACK RODS
5. NIPPLE–SIZE 150mm DIA. X 600mm LONG (VARIED IF NECESSARY)
6. HYDRANT CONTROL VALVE – 150mm C.I. GATE VALVE, HUB ENDS, WITH LUGS FOR TIE RODS
7. NIPPLE–SIZE 150mm DIA. X MINIMUM OF 300mm IN LENGTH
8. TIE RODS – 15mm DIA. X 100mm LONGER THAN THE NIPPLE, THREADED BOTH ENDS AND COATED WITH COAL–TAR ENAMEL FOR CORROSION PROTECTION. OMIT RODS IF OVER 6m.
9. CONCRETE VALVE EXTENSION PIPE – 200mm INSIDE DIA.
10. CRUSHED GRAVEL BACKFILL FOR VALVE EXTENSION PIPE AND VALVE BOX BASE
11. TELESCOPIC VALVE BOX
12. 450mm X 450mm X 50mm CONCRETE PAD ON UNDISTURBED GROUND
13. CONCRETE SUPPORT BLOCK (MIN. 150mm X 300mm X 50mm) TO UNDISTURBED THRENCH BOTTOM
14. DRAIN HOLE FROM BASE OF HYDRANT – MUST BE PROTECTED DURING THE POURING OF THE THRUST BLOCK

TYPICAL HYDRANT ASSEMBLY  
NTS



TYPICAL WATER SERVICE CONNECTION  
20mm Ø OR 25mm Ø CONNECTION  
NTS

"These Record Drawings have been prepared based on information provided by the Contractor and others. Dayton & Knight Ltd. has not verified the accuracy or completeness of the information provided to them and does not warrant the accuracy or completeness of these Record Drawings. Users of these Record Drawings assume all risk of loss resulting from their use."



NOTES:

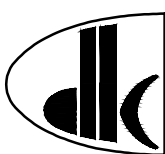
1. THIS DRAWING SHOULD BE REVIEWED IN CONJUNCTION WITH THE DOCUMENT "WATER METER INSTALLATION STANDARDS AND SPECIFICATIONS" BY CITY OF SURREY.
2. METER AND REMOTE METER SENSOR BY OTHERS

WATER METER INSTALLATION FOR METERS 25mm Ø AND SMALLER  
NTS

PLOT: FULL 1:5 HALF 1:10

REVISIONS	ISSUE	DATE	DRAWN	CHK'D	APP'D	DESCRIPTION	ISSUE	DATE	DRAWN	CHK'D	APP'D	DESCRIPTION
DRAWING	A	MAR10/09	MC	CC		ISSUED FOR TENDER	D	JUN11/14	M.C.	C.C.	C.C.	REVISED RECORD DRAWING
	B	APR30/09	MC	CC	CC	ISSUED FOR CONSTRUCTION						
	C	DEC04/09	A.S.	C.C.	C.C.	RECORD DRAWING						

DESIGNED AS/MC  
DRAWN MC  
CHECKED CC



**Dayton & Knight Ltd.**  
CONSULTING ENGINEERS  
#210-889 HARBOURSIDE DR., NORTH VANCOUVER, B.C. V7P 3S1  
TEL.: (604) 990-4800 FAX: (604) 990-4805 www.dayton-knight.com

SUNSHINE COAST REGIONAL DISTRICT  
JERVIS INLET ROAD WATERMAIN EXTENSION  
DETAILS

CONTRACT No. 09 103

SCALE: AS SHOWN

DRAWING No. 028.199.0001

SHEET No. **G4** ISSUE **D**






**NOTE:**  
VALVE BOXES TO BE SET WITH  
RUN OF WATERMAIN SO THAT  
LENGTHWISE, COVER IS PARALLEL  
WITH WATERPIPE  
BLACKTOP AROUND COVERS  
APPLICABLE TO ALL VALVES ON  
BOULEVARDS AND PAVEMENTS

NOTE:  
ALL AIR VALVES TO BE OF THE DOUBLE ACTING TYPE.  
TERMINAL CITY IRON WORKS A.V.22, A.V.24 OR  
EQUIVALENT.

*"These Record Drawings have been prepared based on information provided by the Contractor and others. Dayton & Knight Ltd. has not verified the accuracy or completeness of the information provided to them and does not warrant the accuracy or completeness of these Record Drawings. Users of these Record Drawings assume all risk of loss resulting from their use."*

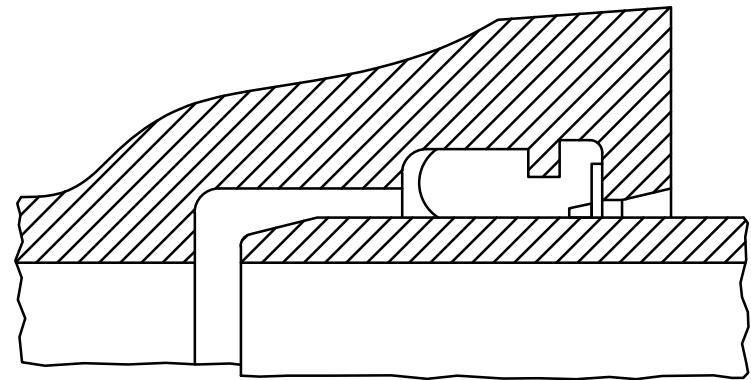
AutoCAD DRAWING	REVISIONS	PLOT: FULL 1:5      HALF 1:10																				CONTRACT NO. 09-103															
		ISSUE	DATE	DRAWN	CHK'D	APP'D	DESCRIPTION	ISSUE	DATE	DRAWN	CHK'D	APP'D	DESCRIPTION	DESIGNED	AS/MC		<b>Dayton &amp; Knight Ltd.</b> <b>CONSULTING ENGINEERS</b> #210-889 HARBOURSIDE DR., NORTH VANCOUVER, B.C. V7P 3S1 TEL.: (604) 990-4800 FAX: (604) 990-4805 www.dayton-knight.com	SUNSHINE COAST REGIONAL DISTRICT JERVIS INLET ROAD WATERMAIN EXTENSION DETAILS										SCALE: AS SHOWN									
		A	MAR10/09	MC	CC		ISSUED FOR TENDER	D	JUN11/14	M.C.	C.C.	C.C.	REVISED RECORD DRAWING	DRAWN	MC													DRAWING No. 028.199.0001									
		B	APR30/09	MC	CC	CC	ISSUED FOR CONSTRUCTION							CHECKED	CC													SHEET No.      G5      ISSUE D									
		C	DEC04/09	A.S.	C.C.	C.C.	RECORD DRAWING																														

CONTRACT No. 09 103

SCALE: AS SHOWN

DRAWING No. 028.199.0001		
SHEET No.	G5	ISSUE D

FILE: C:\Dak CAD Drawings\DWG\SERVER P Shira\Readings\SUNSHINE COAST\28-199-1\REVISION 2\GENERAL\28-199-1 C4-6.dwg Tab: G6 14-12-02 ver:1.0

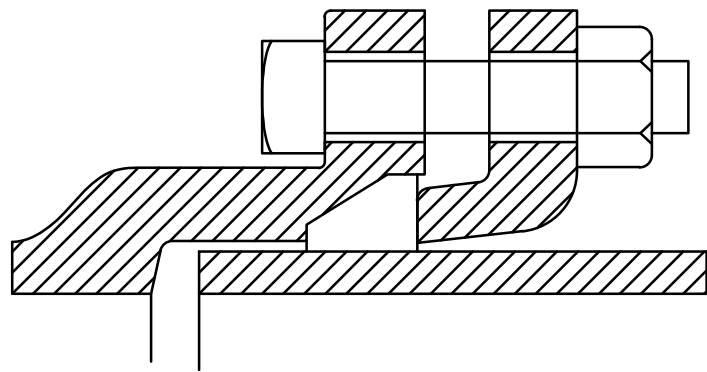


**TYTON (TYP)**

FOR INSTALLATION WITH ALL TYPES OF RUBBER-RING-JOINT CAST IRON PIPE. LAYING LENGTH AND METAL THICKNESS TO AWWA SPECIFICATIONS C110-77. METAL SPECIFICATIONS TO ASTM A126. AVAILABLE IN FITTING SIZES 100mm TO 300mm INCLUSIVE. SUPPLIED WITH NECESSARY RUBBER GASKETS. TIE ROD LUGS AVAILABLE IN FITTING SIZES 100mm TO 300mm INCLUSIVE.

**FLANGED ENDS**

AVAILABLE IN VALVES AND FITTINGS 50mm TO 750mm INCLUSIVE; HYDRANTS 100mm AND 150mm. LAYING LENGTHS AND DRILLING TO AMERICAN STANDARD. FOR CAST IRON FLANGED FITTINGS CLASS 125 (B16.1-1975) METAL THICKNESS TO ASTM SPECIFICATIONS (B16.1-1975) METAL SPECIFICATIONS TO ASTM SPECIFICATION A126

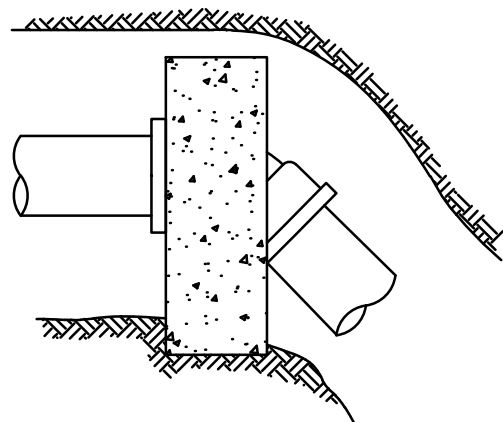
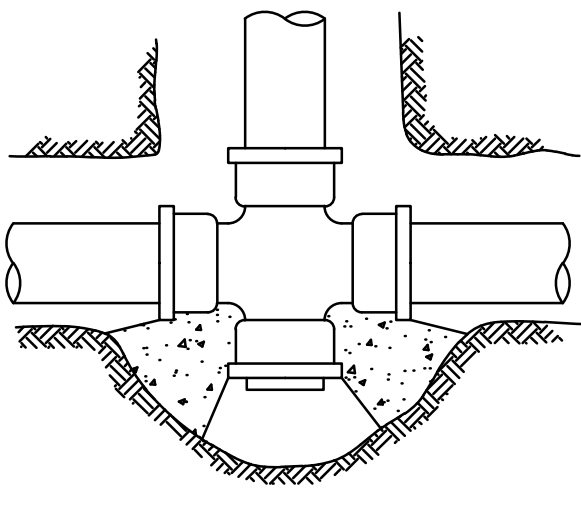
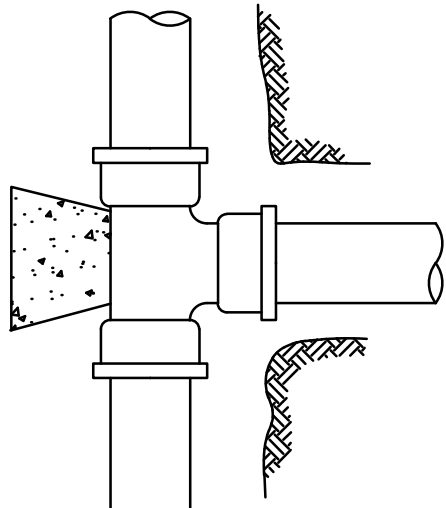
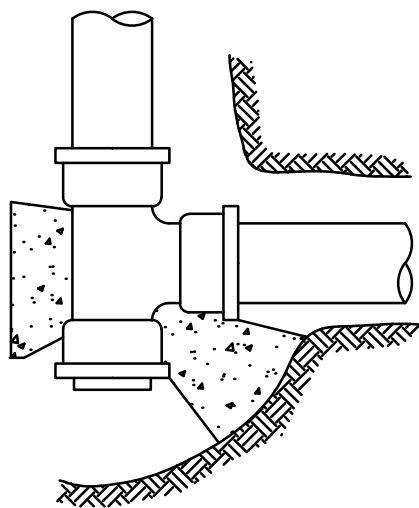


**TER-MECH (MJ)**

FOR USE WITH CANADIAN, AMERICAN AND BRITISH MECHANICAL JOINT OR GROOVED HUB TYPE CAST IRON PIPE. LAYING LENGTHS AND METAL THICKNESS TO AWWA SPECIFICATION C110-77. METAL SPECIFICATIONS TO ASTM A126. AVAILABLE IN VALVES AND FITTING 100mm TO 500mm INCLUSIVE, HYDRANTS 100mm AND 150mm SUPPLIED WITH AWWA RUBBER GASKETS CORROSION RESISTANT BOLTS AND NUTS, "SORBO-MAT" CAST IRON GLANDS. TIE ROD LUGS AVAILABLE ON VALVES AND HYDRANTS 100mm AND 150mm AND ON FITTINGS 100mm TO 300mm

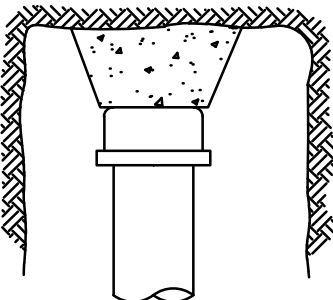
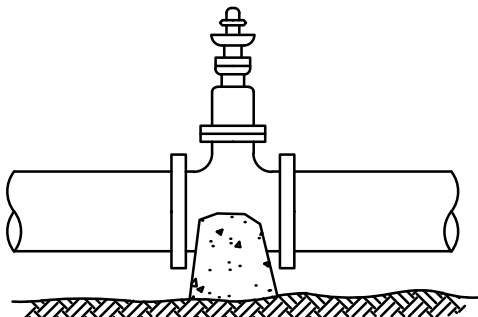
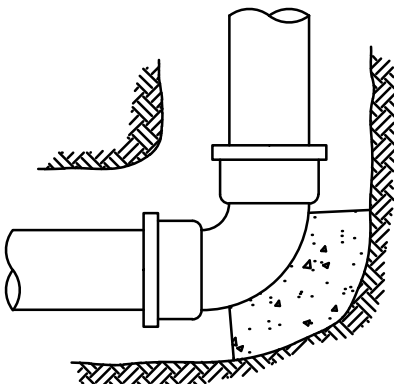
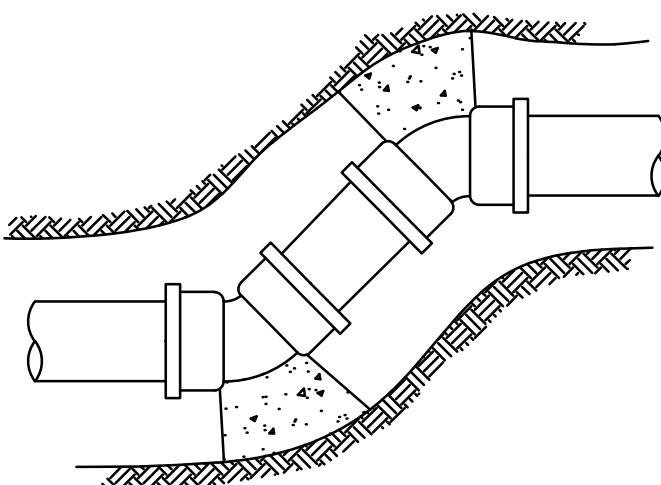
**TYPES OF HUB CONNECTIONS  
FOR USE WITH CAST IRON PIPE**

NTS



**ELEVATION**

BLOCK TO BE OF SUFFICIENT WEIGHT TO RESIST OUTWARD THRUST.



**NOTE:**

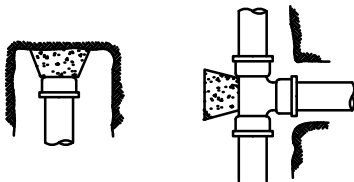
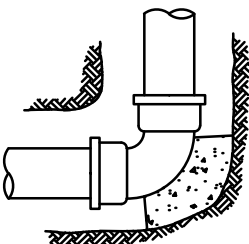
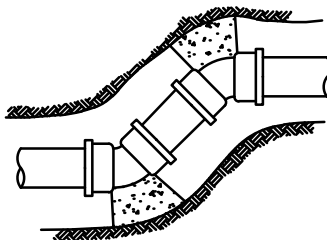
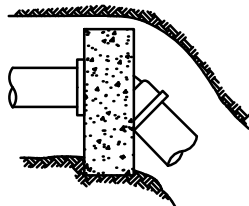
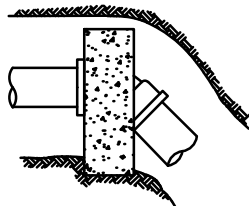
ALL BLOCKING TO EXTEND INTO UNDISTURBED SOIL

**SUGGESTED THRUST BLOCK LOCATIONS**

NTS

"These Record Drawings have been prepared based on information provided by the Contractor and others. Dayton & Knight Ltd. has not verified the accuracy or completeness of the information provided to them and does not warrant the accuracy or completeness of these Record Drawings. Users of these Record Drawings assume all risk of loss resulting from their use."

**CONCRETE BLOCKING**

		CAPS, PLUGS & TEES		90° ELBOWS		45° ELBOWS		22½° ELBOWS		11¼° ELBOWS		VERTICAL BENDS
						SEE 22½° ELBOW				SEE 22½° ELBOW		
MAXIMUM ALLOWABLE SOIL BEARING LOADS (KPa)	FITTING SIZE (mm)	THRUST (kN)	MINIMUM BLOCK BASE AREA (m²)	THRUST (kN)	MINIMUM BLOCK BASE AREA (m²)	THRUST (kN)	MINIMUM BLOCK BASE AREA (m²)	THRUST (kN)	MINIMUM BLOCK BASE AREA (m²)	THRUST (kN)	MINIMUM BLOCK BASE AREA (m²)	SEE NOTE 4
1915.2 —HARDPAN OR SHALE—	100	16	0.019	23	0.023	12	0.009	6	0.007	3	0.004	
	150	33	0.037	47	0.046	25	0.023	13	0.009	7	0.007	
	200	57	0.056	81	0.084	44	0.046	22	0.023	11	0.009	
	300	122	0.130	172	0.177	93	0.093	48	0.046	24	0.023	
1149.1 —HARD CLAY—	100	16	0.023	23	0.037	12	0.019	6	0.009	3	0.006	
	150	33	0.056	47	0.084	25	0.046	13	0.019	7	0.009	
	200	57	0.102	81	0.140	44	0.074	22	0.037	11	0.019	
	300	122	0.214	172	0.297	93	0.158	48	0.084	24	0.037	
574.6 —SAND— COURSE, LOOSE OR FINE COMPACT	100	16	0.056	23	0.084	12	0.046	6	0.019	3	0.009	
	150	33	0.112	47	0.093	25	0.093	13	0.046	7	0.019	
	200	57	0.195	81	0.279	44	0.149	22	0.074	11	0.037	
	300	122	0.418	172	0.604	93	0.316	48	0.167	24	0.084	
191.5 —SOFT CLAY—	100	16	0.167	23	0.242	12	0.130	6	0.065	3	0.037	
	150	33	0.344	47	0.492	25	0.269	13	0.139	7	0.065	
	200	57	0.595	81	0.845	44	0.455	22	0.232	11	0.121	

**NOTES:**

- CONCRETE THRUST BLOCKS SHALL EXTEND INTO UNDISTURBED SOIL. THRUST IN SOFT UNSTABLE SOILS WILL REQUIRE REMOVAL OF SOIL AND REPLACEMENT WITH COMPACTABLE FILL OF SUFFICIENT STABILITY TO RESIST THRUST OR SPECIAL ANCHOR BLOCKS AS DIRECTED BY THE CITY ENGINEER.
- BLOCKING WILL BE REQUIRED FOR ALL ELBOWS, TEES, PLUGS, CAPS, PIPE DEFLECTIONS AND OTHER FITTINGS ON LIVE MAINS WHERE ANCHOR RODS ARE NOT PRACTICAL.
- THRUST BLOCKS SHALL BE OF AT LEAST 15 MPa 28 DAYS CONCRETE OR HIGH EARLY STRENGTH CONCRETE IF REQUIRED.
- AT VERTICAL BENDS BLOCKING SHALL BE OF SUFFICIENT WEIGHT TO RESIST OUTWARD THRUST.
- BLOCKING SHALL BE KEPT CLEAR OF BELLS WHERE POSSIBLE.
- FOR SPECIFICATION OF LARGER DIAMETER PIPES SEE ENGINEER.

CONTRACT No. 09 103

PLOT: FULL 1:5 HALF 1:10

REVISIONS	ISSUE	DATE	DRAWN	CHK'D	APP'D
A	MAR10/09	MC	CC		
B	APR30/09	MC	CC	CC	
C	DEC04/09	A.S.	C.C.	C.C.	

DESCRIPTION	ISSUE	DATE	DRAWN	CHK'D	APP'D	DESCRIPTION
ISSUED FOR TENDER	D	JUN11/14	M.C.	C.C.	C.C.	REVISED RECORD DRAWING
ISSUED FOR CONSTRUCTION						
RECORD DRAWING						

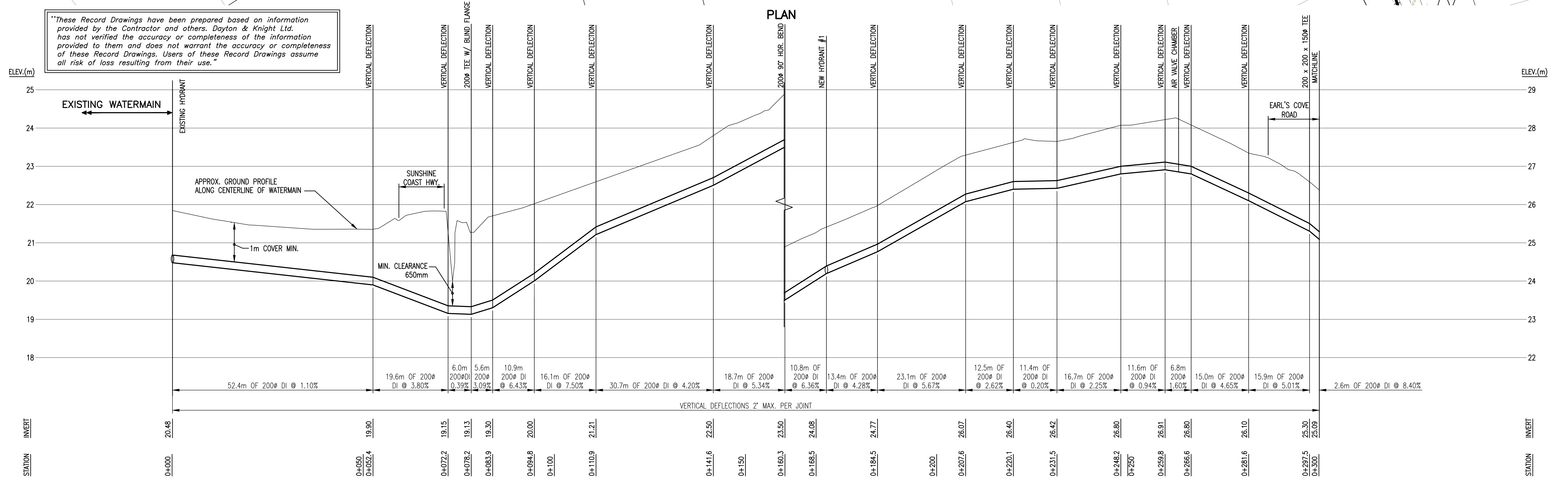
DESIGNED AS/MC  
DRAWN MC  
CHECKED CC




SUNSHINE COAST REGIONAL DISTRICT  
JERVIS INLET ROAD WATERMAIN EXTENSION  
DETAILS

SCALE: AS SHOWN		
DRAWING No. 028.199.0001		
SHEET No.	G6	ISSUE D



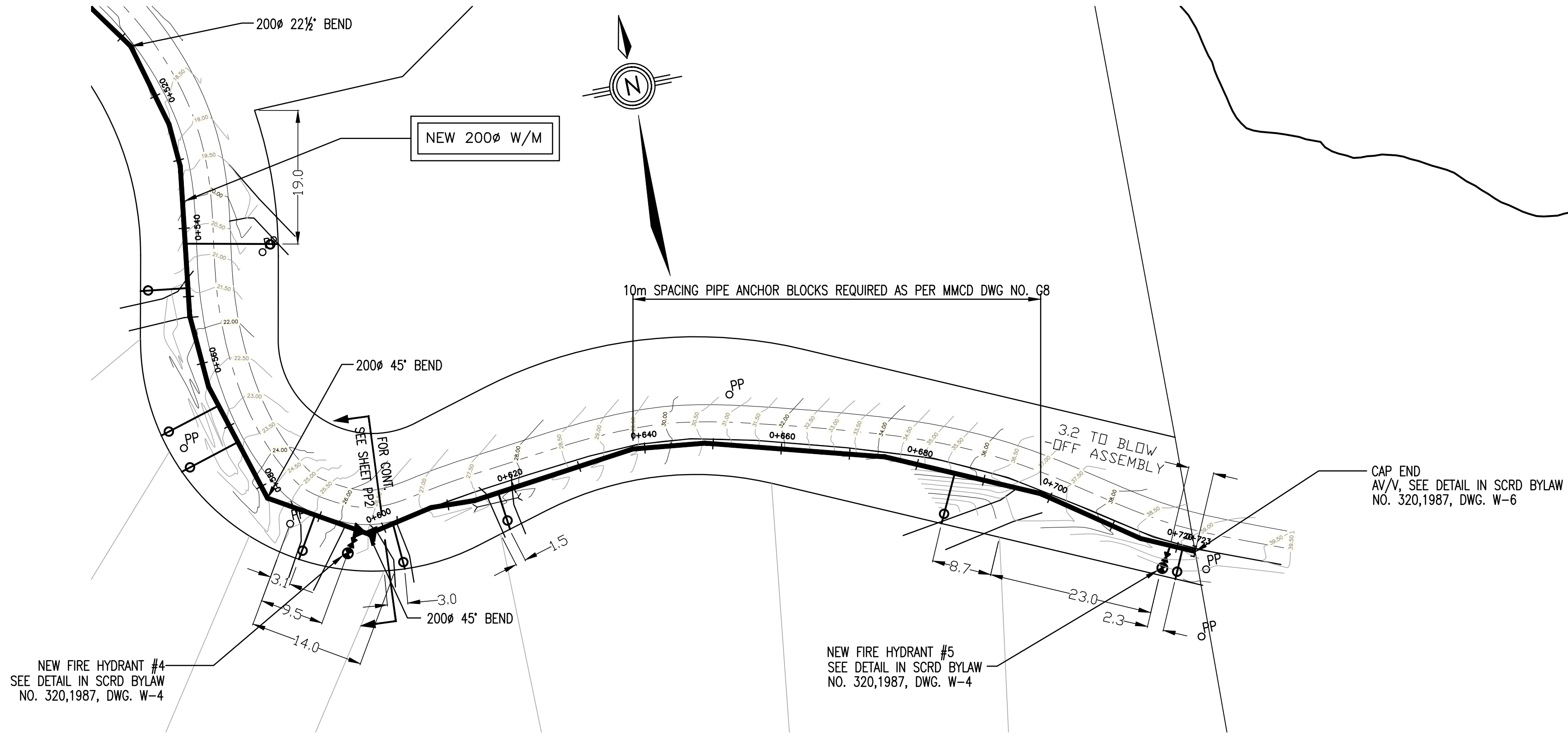


PLOT: FULL 2:1 HALF 1:1											PROFILE											CONTRACT No. 09 103							
AutoCAD DRAWING	REVISIONS	ISSUE	DATE	DRAWN	CHK'D	APP'D	DESCRIPTION					ISSUE	DATE	DRAWN	CHK'D	APP'D	DESCRIPTION					<div><div><b>Dayton &amp; Knight Ltd.</b> CONSULTING ENGINEERS #210-889 HARBOURSIDE DR., NORTH VANCOUVER, B.C. V7P 3S1 TEL.: (604) 990-4800 FAX: (604) 990-4805 www.dayton-knight.com</div></div>		SUNSHINE COAST REGIONAL DISTRICT JERVIS INLET ROAD WATERMAIN EXTENSION PLAN AND PROFILE STA. 0+000 TO STA. 0+300				SCALE: HOR. 1:500; VER. 1:50	
		A	FEB11/09	MC	CC		ISSUED FOR REVIEW					D	DEC04/09	A.S.	C.C.	C.C.	RECORD DRAWING							DRAWING No. 28.199.0001					
		B	MAR10/09	MC	CC	CC	ISSUED FOR TENDER					E	JUN12/14	M.C.	C.C.	C.C.	RECORD DRAWING							SHEET No. PP1 ISSUE E					
		C	APR30/09	MC	CC	CC	ISSUED FOR CONSTRUCTION																						
																						DRAWING No. 28.199.0001							
																						SHEET No.		PP1		ISSUE E			

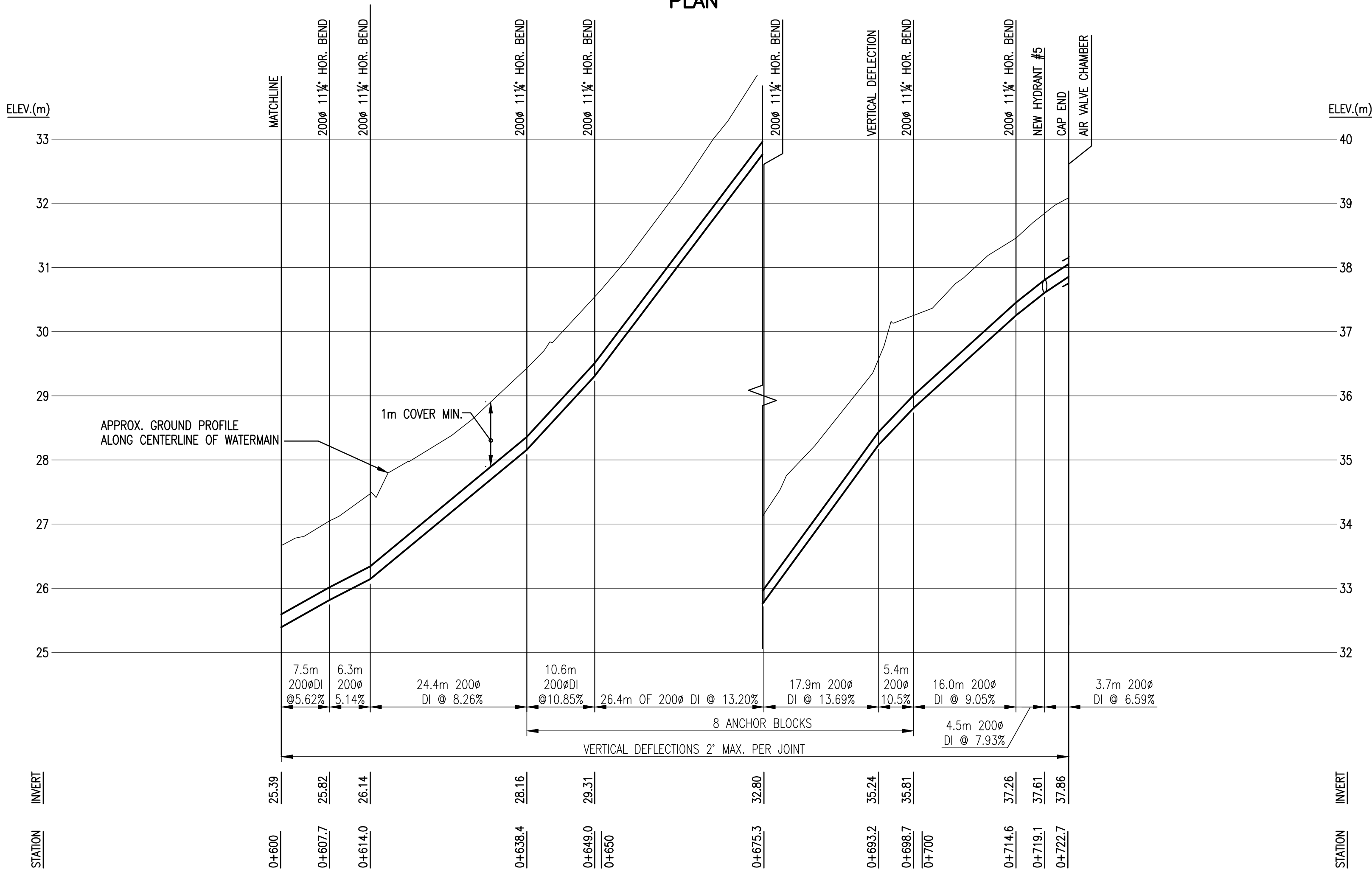








PLAN



PROFILE

"These Record Drawings have been prepared based on information provided by the Contractor and others. Dayton & Knight Ltd. has not verified the accuracy or completeness of the information provided to them and does not warrant the accuracy or completeness of these Record Drawings. Users of these Record Drawings assume all risk of loss resulting from their use."

PLOT: FULL 2:1 HALF 1:1

AutoCAD DRAWING	REVISIONS						REVISIONS						REVISIONS					
	ISSUE	DATE	DRAWN	CHK'D	APP'D	DESCRIPTION	ISSUE	DATE	DRAWN	CHK'D	APP'D	DESCRIPTION	ISSUE	DATE	DRAWN	CHK'D	APP'D	DESCRIPTION
	A	FEB11/09	MC	CC		ISSUED FOR REVIEW	D	DEC04/09	A.S.	C.C.	C.C.	RECORD DRAWING						
	B	MAR10/09	MC	CC	CC	ISSUED FOR TENDER	E	JUN12/14	M.C.	C.C.	C.C.	RECORD DRAWING						
	C	APR30/09	MC	CC	CC	ISSUED FOR CONSTRUCTION												

DESIGNED AS/MC  
DRAWN MC  
CHECKED CC



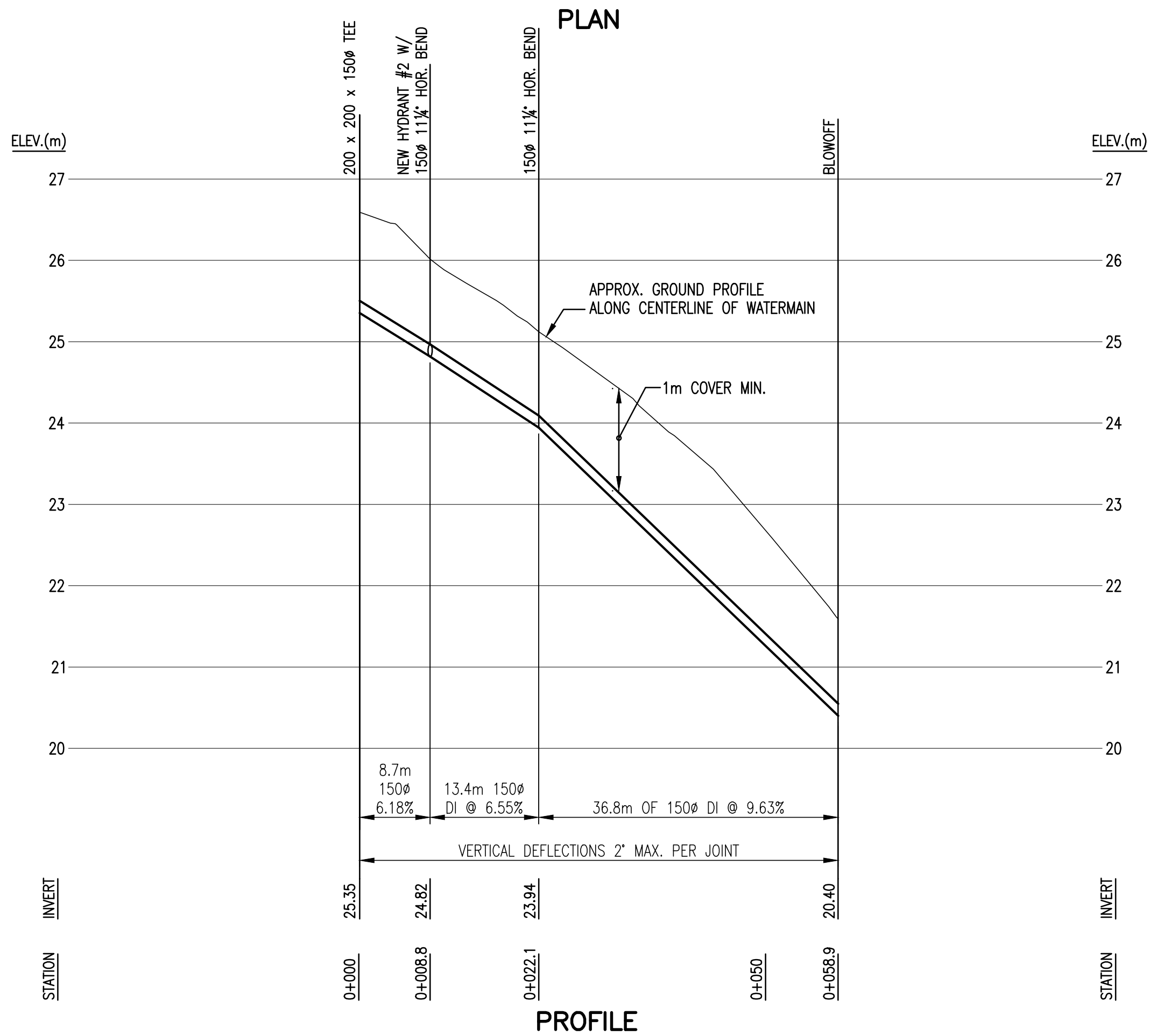
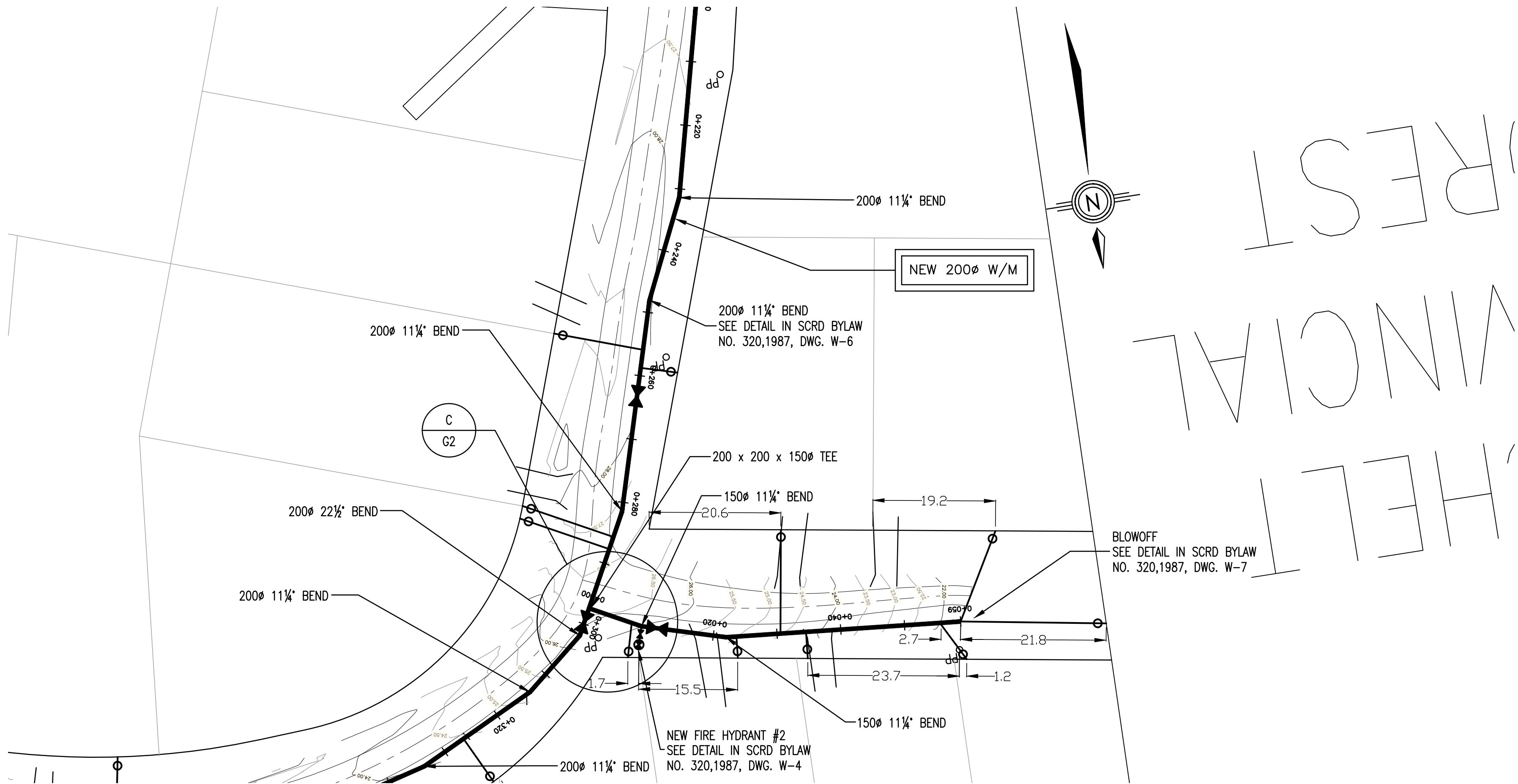
**Dayton & Knight Ltd.**  
CONSULTING ENGINEERS  
#210-889 HARBOURSIDE DR., NORTH VANCOUVER, B.C. V7P 3S1  
TEL.: (604) 990-4800 FAX: (604) 990-4805 www.dayton-knight.com

SUNSHINE COAST REGIONAL DISTRICT  
JERVIS INLET ROAD WATERMAIN EXTENSION  
PLAN AND PROFILE  
STA. 0+600 TO STA. 0+722.7

CONTRACT No. 09 103

SCALE: HOR. 1:500; VER. 1:50		
DRAWING No. 28.199.0001		
SHEET No.	PP3	ISSUE E

FILE: G:\DWG CAD Drawings\USER\SERVER P Share\Records\SUNSHINE COAST\28-199-1\REVISION 2\PLAN & PROFILE\28-199-1 PLAN-PROFILE.dwg Tab PP4 14-12-02 vcmjcd



"These Record Drawings have been prepared based on information provided by the Contractor and others. Dayton & Knight Ltd. has not verified the accuracy or completeness of the information provided to them and does not warrant the accuracy or completeness of these Record Drawings. Users of these Record Drawings assume all risk of loss resulting from their use."

PLOT: FULL 2:1 HALF 1:1

REVISIONS	ISSUE	DATE	DRAWN	CHK'D	APP'D	DESCRIPTION	ISSUE	DATE	DRAWN	CHK'D	APP'D	DESCRIPTION
	A	FEB11/09	MC	CC		ISSUED FOR REVIEW	D	DEC04/09	A.S.	C.C.	C.C.	RECORD DRAWING
	B	MAR10/09	MC	CC	CC	ISSUED FOR TENDER	E	JUN12/14	M.C.	C.C.	C.C.	RECORD DRAWING
	C	APR30/09	MC	CC	CC	ISSUED FOR CONSTRUCTION						

REVISIONS														
ISSUE	DATE	DRAWN	CHK'D	APP'D	DESCRIPTION					ISSUE	DATE	DRAWN	CHK'D	APP'D
A	FEB11/09	MC	CC		ISSUED FOR REVIEW					D	DEC04/09	A.S.	C.C.	C.C.
B	MAR10/09	MC	CC	CC	ISSUED FOR TENDER					E	JUN12/14	M.C.	C.C.	C.C.
C	APR30/09	MC	CC	CC	ISSUED FOR CONSTRUCTION									

REVISIONS														
ISSUE	DATE	DRAWN	CHK'D	APP'D	DESCRIPTION					ISSUE	DATE	DRAWN	CHK'D	APP'D
A	FEB11/09	MC	CC		ISSUED FOR REVIEW					D	DEC04/09	A.S.	C.C.	C.C.
B	MAR10/09	MC	CC	CC	ISSUED FOR TENDER					E	JUN12/14	M.C.	C.C.	C.C.
C	APR30/09	MC	CC	CC	ISSUED FOR CONSTRUCTION									

REVISIONS														
ISSUE	DATE	DRAWN	CHK'D	APP'D	DESCRIPTION					ISSUE	DATE	DRAWN	CHK'D	APP'D
A	FEB11/09	MC	CC		ISSUED FOR REVIEW					D	DEC04/09	A.S.	C.C.	C.C.
B	MAR10/09	MC	CC	CC	ISSUED FOR TENDER					E	JUN12/14	M.C.	C.C.	C.C.
C	APR30/09	MC	CC	CC	ISSUED FOR CONSTRUCTION									

REVISIONS														
ISSUE	DATE	DRAWN	CHK'D	APP'D	DESCRIPTION					ISSUE	DATE	DRAWN	CHK'D	APP'D
A	FEB11/09	MC	CC		ISSUED FOR REVIEW					D	DEC04/09	A.S.	C.C.	C.C.
B	MAR10/09	MC	CC	CC	ISSUED FOR TENDER					E	JUN12/14	M.C.	C.C.	C.C.
C	APR30/09	MC	CC	CC	ISSUED FOR CONSTRUCTION									

REVISIONS														
ISSUE	DATE	DRAWN	CHK'D	APP'D	DESCRIPTION					ISSUE	DATE	DRAWN	CHK'D	APP'D
A	FEB11/09	MC	CC		ISSUED FOR REVIEW					D	DEC04/09	A.S.	C.C.	C.C.
B	MAR10/09	MC	CC	CC	ISSUED FOR TENDER					E	JUN12/14	M.C.	C.C.	C.C.
C	APR30/09	MC	CC	CC	ISSUED FOR CONSTRUCTION									

REVISIONS														
ISSUE	DATE	DRAWN	CHK'D	APP'D	DESCRIPTION					ISSUE	DATE	DRAWN	CHK'D	APP'D
A	FEB11/09	MC	CC		ISSUED FOR REVIEW					D	DEC04/09	A.S.	C.C.	C.C.
B	MAR10/09	MC	CC	CC	ISSUED FOR TENDER					E	JUN12/14	M.C.	C.C.	C.C.
C	APR30/09	MC	CC	CC	ISSUED FOR CONSTRUCTION									

REVISIONS														
ISSUE	DATE	DRAWN	CHK'D	APP'D	DESCRIPTION					ISSUE	DATE	DRAWN	CHK'D	APP'D
A	FEB11/09	MC	CC		ISSUED FOR REVIEW					D	DEC04/09	A.S.	C.C.	C.C.
B	MAR10/09	MC	CC	CC	ISSUED FOR TENDER					E	JUN12/14	M.C.	C.C.	C.C.
C	APR30/09	MC	CC	CC	ISSUED FOR CONSTRUCTION									

REVISIONS														
ISSUE	DATE	DRAWN	CHK'D	APP'D	DESCRIPTION					ISSUE	DATE	DRAWN	CHK'D	APP'D
A	FEB11/09	MC	CC		ISSUED FOR REVIEW					D	DEC04/09	A.S.	C.C.	C.C.
B	MAR10/09	MC	CC	CC	ISSUED FOR TENDER					E	JUN12/14	M.C.	C.C.	C.C.
C	APR30/09	MC	CC	CC	ISSUED FOR CONSTRUCTION									

REVISIONS														
ISSUE	DATE	DRAWN	CHK'D	APP'D	DESCRIPTION					ISSUE	DATE	DRAWN	CHK'D	APP'D
A	FEB11/09	MC	CC		ISSUED FOR REVIEW					D	DEC04/09	A.S.	C.C.	C.C.
B	MAR10/09	MC	CC	CC	ISSUED FOR TENDER					E	JUN12/14	M.C.	C.C.	C.C.
C	APR30/09	MC	CC	CC	ISSUED FOR CONSTRUCTION									

REVISIONS														
ISSUE	DATE	DRAWN	CHK'D	APP'D	DESCRIPTION					ISSUE	DATE	DRAWN	CHK'D	APP'D
A	FEB11/09	MC	CC		ISSUED FOR REVIEW					D	DEC04/09	A.S.	C.C.	C.C.
B	MAR10/09	MC	CC	CC	ISSUED FOR TENDER					E	JUN12/14	M.C.	C.C.	C.C.
C	APR30/09	MC	CC	CC	ISSUED FOR CONSTRUCTION									

REVISIONS														
ISSUE	DATE	DRAWN	CHK'D	APP'D	DESCRIPTION					ISSUE	DATE	DRAWN	CHK'D	APP'D
A	FEB11/09	MC	CC		ISSUED FOR REVIEW					D	DEC04/09	A.S.	C.C.	C.C.
B	MAR10/09	MC	CC	CC	ISSUED FOR TENDER					E	JUN12/14	M.C.	C.C.	C.C.
C	APR30/09	MC	CC	CC	ISSUED FOR CONSTRUCTION									

REVISIONS														
ISSUE	DATE	DRAWN	CHK'D	APP'D	DESCRIPTION					ISSUE	DATE	DRAWN	CHK'D	APP'D
A	FEB11/09	MC	CC		ISSUED FOR REVIEW					D	DEC04/09	A.S.	C.C.	C.C.
B	MAR10/09	MC	CC	CC	ISSUED FOR TENDER					E	JUN12/14	M.C.	C.C.	C.C.
C	APR30/09	MC	CC	CC	ISSUED FOR CONSTRUCTION									

REVISIONS														
ISSUE	DATE	DRAWN	CHK'D	APP'D	DESCRIPTION					ISSUE	DATE	DRAWN	CHK'D	APP'D
A	FEB11/09	MC	CC		ISSUED FOR REVIEW					D	DEC04/09	A.S.	C.C.	C.C.
B	MAR10/09	MC	CC	CC	ISSUED FOR TENDER					E	JUN12/14	M.C.	C.C.	C.C.
C	APR30/09	MC	CC	CC	ISSUED FOR CONSTRUCTION									

REVISIONS														
ISSUE	DATE	DRAWN	CHK'D	APP'D	DESCRIPTION					ISSUE	DATE	DRAWN	CHK'D	APP'D
A	FEB11/09	MC	CC		ISSUED FOR REVIEW					D	DEC04/09	A.S.	C.C.	C.C.
B	MAR10/09	MC	CC	CC	ISSUED FOR TENDER					E	JUN12/14	M.C.	C.C.	C.C.
C	APR30/09	MC	CC	CC	ISSUED FOR CONSTRUCTION									

REVISIONS														
ISSUE	DATE	DRAWN	CHK'D	APP'D	DESCRIPTION					ISSUE	DATE	DRAWN	CHK'D	APP'D
A	FEB11/09	MC	CC		ISSUED FOR REVIEW					D	DEC04/09	A.S.	C.C.	C.C.
B	MAR10/09	MC	CC	CC	ISSUED FOR TENDER					E	JUN12/14	M.C.	C.C.	C.C.
C	APR30/09	MC	CC	CC	ISSUED FOR CONSTRUCTION									

REVISIONS														
ISSUE	DATE	DRAWN	CHK'D	APP'D	DESCRIPTION					ISSUE	DATE	DRAWN	CHK'D	APP'D
A	FEB11/09	MC	CC		ISSUED FOR REVIEW					D	DEC04/09	A.S.	C.C.	C.C.
B	MAR10/09	MC	CC	CC	ISSUED FOR TENDER					E	JUN12/14	M.C.	C.C.	C.C.
C	APR30/09	MC	CC	CC	ISSUED FOR CONSTRUCTION									

REVISIONS														
ISSUE	DATE	DRAWN	CHK'D	APP'D	DESCRIPTION					ISSUE	DATE	DRAWN	CHK'D	APP'D
A	FEB11/09	MC	CC		ISSUED FOR REVIEW					D	DEC04/09	A.S.	C.C.	C.C.
B	MAR10/09	MC	CC	CC	ISSUED FOR TENDER					E	JUN12/14	M.C.	C.C.	C.C.
C	APR30/09	MC	CC	CC	ISSUED FOR CONSTRUCTION									

REVISIONS
-----------