



# SUNSHINE COAST REGIONAL HOSPITAL DISTRICT



## REGULAR BOARD MEETING TO BE HELD IN THE BOARDROOM OF THE SUNSHINE COAST REGIONAL DISTRICT OFFICES AT 1975 FIELD ROAD, SECHELT, B.C.

Thursday, January 25, 2024

### AMENDED AGENDA

---

**CALL TO ORDER** 9:00 a.m.  
(Corporate Officer Presiding)

#### I ELECTION OF THE CHAIR FOR 2024

#### II ELECTION OF THE VICE-CHAIR FOR 2024 (Newly Elected Chair Presiding)

#### AGENDA

1. Adoption of Agenda

Page 1  
⇒Insert  
1a

#### MINUTES

2. Sunshine Coast Regional Hospital District Board Meeting Minutes of October 19, 2023

Annex A  
pp. 2-4

#### BUSINESS ARISING FROM MINUTES AND UNFINISHED BUSINESS

#### PRESENTATIONS AND DELEGATIONS

#### REPORTS

3. MNP LLP 2023 Audit Service Plan  
General Manager, Corporate Services / Chief Financial Officer
4. 2024 Meeting Calendar  
General Manager, Corporate Services / Chief Financial Officer

Annex B  
pp. 5-24

Annex C  
pp. 25-26

#### COMMUNICATIONS

5. ⇒ADD Vancouver Coastal Health Local Governance Liaison Meeting Summary – Sunshine Coast dated November 17, 2023 including Public Health Presentation from Dr. Moliehi Khaketla

pp. 27-54

#### MOTIONS

#### BYLAWS

**NEW BUSINESS**  
**IN CAMERA**  
**ADJOURNMENT**

## **Vancouver Coastal Health**

### **Local Governance Liaison Meeting Summary – Sunshine Coast**

*November 17, 2023*

#### Introduction

Thank you for joining Vancouver Coastal Health (VCH) leaders and staff at the November 17, 2023 Local Governance Liaison (LGL) meeting, which was focused on the Sunshine Coast community.

This document provides a high-level summary of the meeting, including attendees and key public health and health care-related topics presented by VCH leaders during the session.

Please refer to the attached presentation provided by the Medical Health Officer at the recent LGL for additional information.

#### Meeting Attendees

- Amy Clarke, Constituency Assistant to MLA Nicholas Simons
- Andrew Yeates, CAO, District of Sechelt
- Cristina Ilnitshi, Coordinator, Public Affairs, VCH
- Darlene MacKinnon, Vice President, Coastal Community of Care, VCH
- Don Newman, Sergeant, Sunshine Coast RCMP
- Donna McMahon, Vice-Chair, Sunshine Coast Regional District
- Erica Simpson, Leader, External Relations, VCH
- John Henderson, Mayor, District of Sechelt
- Ihe hiwus Lenora Joe, shíshálh Nation
- Lindsay Roberts, Director of Corporate and Community Services, District of Sechelt
- Marie Duperreault, Director, Sunshine Coast, VCH
- Dr. Marius Welgemoed, Local Medical Director, VCH
- Dr. Moliehi Khaketla, Medical Health Officer, VCH
- Nancy Hughes, Emergency Management Coordinator, Sunshine Coast Regional District
- Patricia Jappy-Loker, Long Term Care and Seniors, Coastal Community of Care, VCH
- Dr. Penny Ballem, Chair, Board of Directors, VCH
- Dr. Peter Edmunds, Senior Medical Leader, Coastal Community of Care, VCH
- Rebecca Anderson, Acting CAO, Town of Gibsons
- Rochelle Jones, Councillor, shíshálh Nation
- Shiloh Joe, Division Manager Community Services, shíshálh Nation
- Silas White, Mayor, Town of Gibsons
- Sue Richardson, Leader, Indigenous Engagement, VCH
- Tina Perreault, Chief Financial Officer, Sunshine Coast Regional District

Regrets: Kate Kerr (SD46 Superintendent), Leonard Lee (SCRD Chair), Pammila Ruth (SD46 Board of Education Trustee), Sheree Haydu (BCEHS Manager, Clinical Operations)

### Meeting summary

This section outlines key public health and health care-related topics presented by VCH leaders during the session:

## **PUBLIC HEALTH**

**Please refer to the public health presentation from Dr. Moliehi Khaketla.**

### **Addressing social determinants**

- Examples of collaborative work underway to address social determinants of health on the Sunshine Coast were shared, including: poverty reduction, childcare and early childhood development, active transportation, climate change, housing affordability and homelessness, as well as engagement around official community plan renewal.

### **Respiratory season**

- Overview of current respiratory season, including circulating viruses, recommendations for influenza and COVID-19 vaccination.
- Booked and walk-in community vaccine clinics have facilitated access for Sunshine Coast residents.
- Effective October 3, a new temporary [Provincial Mask Policy](#) came into effect in VCH healthcare facilities, as an additional layer of protection.

### **Decriminalization**

- Latest coroner data for BC and Sunshine Coast shared. Available [here](#).
- Overall rising trend of overdose deaths in BC, largely due to fentanyl. Inhalation is the predominant method of drug consumption in the region.
- Range of services, such as overdose prevention sites (including safe inhalation spaces), outreach, naloxone, and opioid agonist treatment, have helped to stabilize and decrease deaths on the coast.
- Effective November 8, new provincial [legislation](#) regarding use of substances in certain public and recreation-focused areas came into effect.
  - To work together to address the toxic drug crisis, local governments are required to consult local Medical Health Officers before considering a proposed bylaw relating to consumption of an illegal substance in public.

### **Syphilis**

- Treatable bacterial infection that is sexually transmitted.
- Infection rates have increased over the past few years in BC. Previously, infections predominantly impacted gay/bisexual/men who have sex with men population. There is now a larger outbreak through heterosexual transmission.

- Response strategy underway includes raising awareness, increasing testing, enhanced monitoring, and follow up of cases and contacts amongst others.

## **Alcohol**

- High consumption rates for Sunshine Coast residents are of concern:
  - [Data](#) from the 2021 Population Experiences, Action and Knowledge (SPEAK) survey: increased rates of alcohol consumption and binge drinking.
  - Annual per capita alcohol consumption based on sales data over time: the Sunshine Coast has had higher rates compared to rest of VCH & BC.
- Alcohol use is associated with various health conditions, including cancer and heart disease – which are among the leading causes of death for Sunshine Coast residents.
- Updated Canadian [guidance on alcohol and health](#) provides an opportunity to raise awareness and educate the public.
- Local governments can influence policies around alcohol availability and access - Public Health is able to advise and partner towards a balanced approach.

## **ACUTE CARE**

### **Emergency department renovations**

- VCH is currently undergoing a renovation to the existing Sechelt Hospital Emergency Department that will improve the patient experience, safety for patients and staff, and flow through the department. This work will make immediate improvements within the current footprint of the department, including adding a mental health and substance use space, a family room, and two additional care spaces, renovating the triage area, and making upgrades for safety and privacy.
- VCH is limiting disruptions to care during renovations by utilizing a medical mobile unit, a provincial asset that is being temporarily provided for use as an additional care space. It will be on site at the end of November 2023.
- A contractor has been selected and construction work will begin in December 2023. Expected completion is August 2024.

## **MEDICAL IMAGING**

- Sechelt Hospital will be the home base for a provincial mobile MRI. This will be a provincially shared resource that the Sechelt community will benefit from as more outpatient medical imaging will be accessible locally.

## **LONG TERM CARE**

### **Silverstone Care Centre**

- Shorncliffe Care Home and Totem Lodge residents scheduled to move into their new home at Silverstone Care Centre in January 2024.

- Silverstone Care Centre will house the community's existing Adult Day Program and create a 20-bed increase in long-term care beds on the Sunshine Coast, which includes six additional special care beds that will provide the safety and security required for residents who need extra support, like those with advanced dementia.
- VCH is working on opportunities to expand long-term care beds in this community.

### **Hospice**

- Four interim hospice beds will be part of the services at Silverstone Care Centre.
- VCH is meeting regularly with Sunshine Coast Hospice Society to work on a long-term solution to deliver hospice services.

### **MENTAL HEALTH AND SUBSTANCE USE**

- VCH is developing low-barrier, outpatient adult recovery support programming, which is targeted to begin this winter.
- The VCH Older Adult Mental Health team has expanded its weekly activities, outreach, and accompaniments.
- VCH is operating a clinic in Pender Harbour once a month to provide more accessible Opioid Agonist Therapy services.
- Lift Community Services and Tla'amin Nation have a new drug testing service in qathet that also serves the Sunshine Coast. They use a Fourier-transform infrared (FTIR) spectrometer, a machine that enables advanced drug testing in minutes.
- VCH Harm Reduction team has been supplying people with mail-in envelopes to send to qathet for anonymous testing. Other options to access this service are being explored.

### **PRIMARY CARE**

- VCH is working alongside the Divisions of Family Practice to develop a Primary Care Network on the Sunshine Coast. These Networks are a coordinated initiative between VCH, different health professionals that provide primary care, and community organizations to provide improved access to local primary care.
- Our patient attachment goal is just under 7,000 people and some of the groups that we are focused on attaching include people who are Indigenous, living in remote areas, youth, seniors, and people with mental health concerns.

### **CAPITAL PLANNING**

#### **Master planning**

- Preparations for the Sechelt Hospital site master planning is underway. Contractor selection is underway and the work is targeted for completion in summer 2024.

- A comprehensive infrastructure assessment of Shorncliffe Care Home and Totem Lodge will be completed once the buildings are unoccupied, following the move to Silverstone. The assessment will be used to inform how these facilities can be repurposed, which will be done in partnership with shíshálh Nation.

## **POPULATION & PUBLIC HEALTH UPDATE**

**Dr. Moliehi Khaketla, FRCPC  
Medical Health Officer (Coastal Rural)**

Sunshine Coast Local Governance Liaison Meeting

Friday November 17, 2023



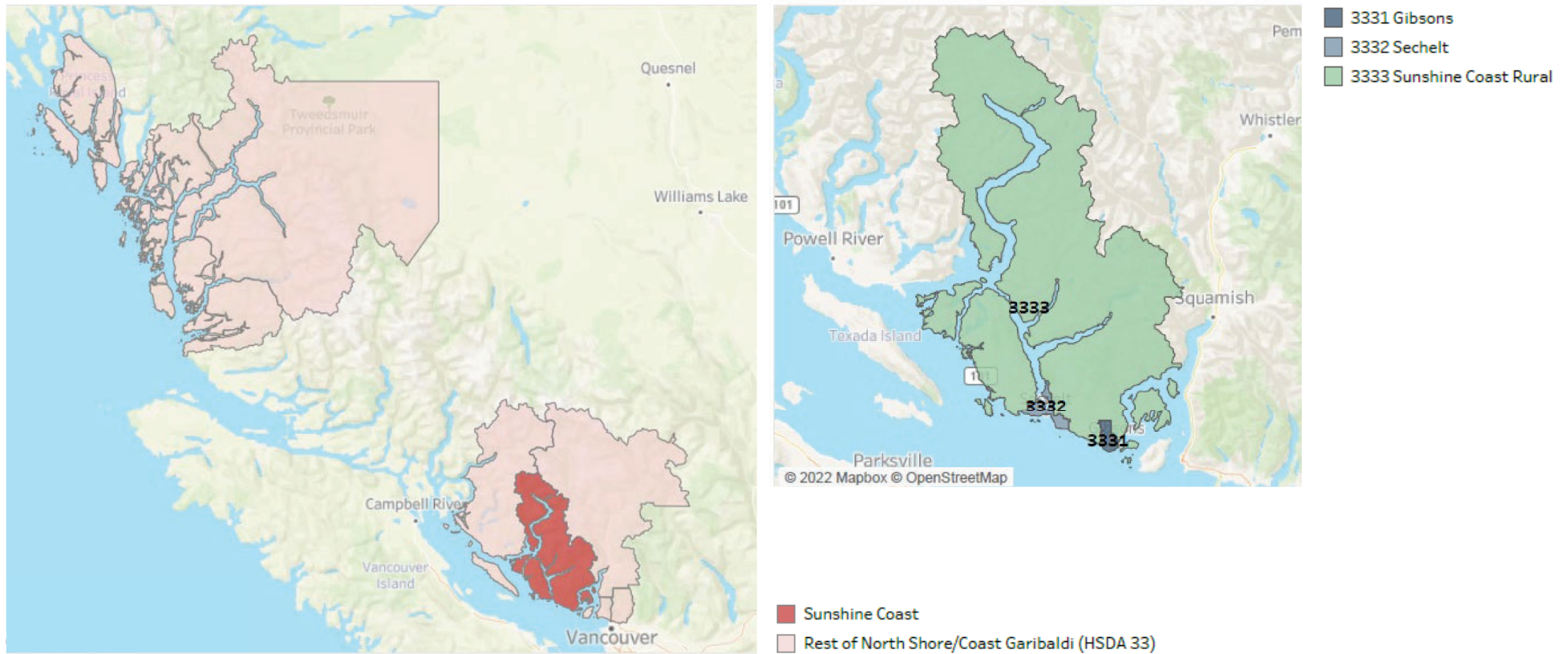
## **Land Acknowledgement**

I wish to acknowledge that I am joining today from the traditional and unceded territory of the shíshálh Nation and Squamish Nation.

# Outline

- ❑ **Healthy Public Policy** - working together to address social determinants of health
- ❑ **Respiratory season update**
  - COVID-19, seasonal influenza, RSV trends
  - Current provincial guidance for respiratory illness season
  - COVID-19 & seasonal influenza vaccines
- ❑ **Drug Overdose Response & Decriminalization**
  - Illicit drug toxicity deaths & death rates
  - Decriminalization & *Restricting Public Consumption of Illegal Substances Act*
- ❑ **Syphilis Update**
  - Syphilis trends & response
- ❑ **Alcohol & Related Harms**
  - Updated Canadian guidance on alcohol and health

## Map of Sunshine Coast Local Health Area (LHA) and Community Health Service Areas (CHSAs)



Source: BC MoH, Health Sector Information, Analysis and Reporting Division, Local Health Profiles, 2020/21, August 2022.

# Working Together Towards Healthy Communities

## Childcare & Early Childhood Development

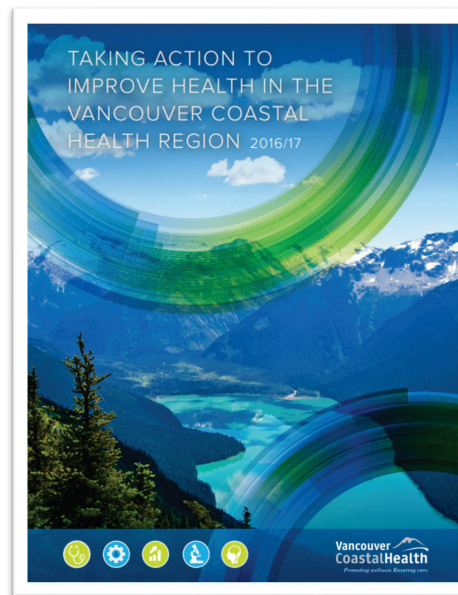
- Joint Child Care Council activities
- Facilitating connections to explore current municipal policy opportunities
- Knowledge translation to emphasize importance of childcare & early childhood development

## Poverty Reduction

- Advocacy: support for inter-government poverty reduction funding application
- Active engagement in inter-sectoral poverty reduction community action
- Support for population data needs to inform various planning and community requests

## Official community plan renewal

- Consultations re population data and related evidence needs to inform local government OCP renewal plans



Source: <https://www.vch.ca/en/about-us/public-health>

## Active Transportation

- Advocacy: Student leadership delegation re affordability and accessibility of youth transit
- Delegation re AT infrastructure and networks and prioritization of AT in Transportation Master Plan
- Facilitation & stakeholder connection eg. ICBC Road Safety Engineering, VCH, municipalities, School District 46 -> identifying avenues to address injury prevention

## Climate Change

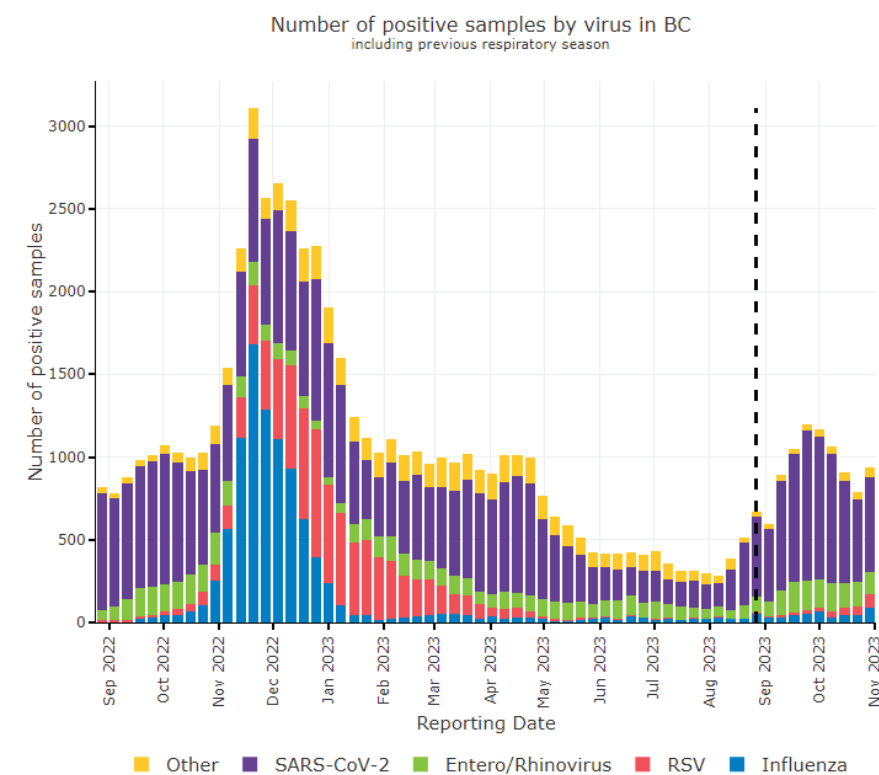
- Advocacy: toward an application to the federal Green Building Infrastructure Fund to expand a climate resilient facilities
- Advocacy: Support for shíshálh Nation - proposed Sunshine Coast Water Storage Project
- Consultations toward the Community Climate Action Plan; collaboration and guidance toward the Community Health and Connectivity theme
- Support for regional climate adaptation planning

## Housing Affordability & Homelessness

- Participation on coast-wide housing planning and needs assessments processes

# **Respiratory Season Update**

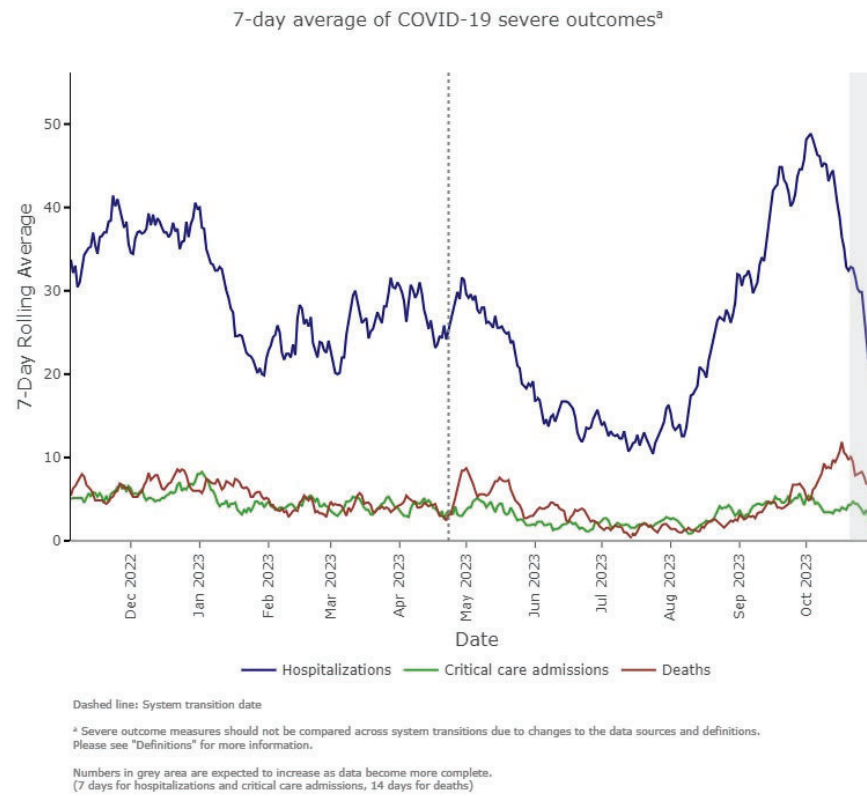
# BC Testing: Counts, Percent Positivity, Historical Trends



Histogram represents positive samples detected per epi-week  
 "Other" includes parainfluenza, adenovirus, human metapneumovirus (HMPV), and seasonal coronaviruses  
 Dashed line indicates the end of 2022/23 respiratory season

Source: [https://bccdc.shinyapps.io/respiratory\\_pathogen\\_characterization/](https://bccdc.shinyapps.io/respiratory_pathogen_characterization/)

# COVID-19: Trends Over Time



Source: [https://bccdc.shinyapps.io/respiratory\\_covid\\_sitrep/](https://bccdc.shinyapps.io/respiratory_covid_sitrep/)

## Current Provincial Guidance for Respiratory Illness Season

- Effective Tuesday Oct. 3, a new temporary Provincial Mask Policy came into effect in VCH health-care facilities, including acute care and VCH community-based health-care services, as well as in long-term care and assisted living homes.
- Medical masks & signage are available at these VCH sites.
- Note that the policy does not apply to patients and residents & and there are also exceptions for:
  - Children under 5 years old;
  - People unable to wear a mask because of a health condition or physical or mental impairment;
  - People unable to put on or remove a mask without help from another person;
  - People communicating with someone with a hearing or cognitive impairment, or in other circumstances where mask wearing interferes with care delivery.

## COVID-19 & Seasonal Influenza Vaccines

- Both vaccines are recommended and provided free to people 6 months of age and older.
- **COVID-19 Vaccine**
  - At least one COVID-19 XBB.1.5 mRNA vaccine is recommended for everyone 6 months of age and older.
  - It is particularly recommended for those at increased risk of COVID-19 infection or severe disease.
- **2023/24 Seasonal Influenza Vaccine**
  - Quadrivalent and Trivalent Inactivated Influenza Vaccines (QIIV & TIIV) and Quadrivalent
  - Live Attenuated Influenza Vaccine (LAIV-Q)
  - Particularly recommended for those at high risk; those capable of transmitting influenza to those at high risk; those who provide essential community services
  - Efforts to ensure access and availability to Sunshine Coast residents

Source: <http://www.bccdc.ca/resource-gallery/Documents/Guidelines%20and%20Forms/Guidelines%20and%20Manuals/Epid/CD%20Manual/Chapter%202%20-%20Imms/Part4/COVID-19-vaccine-eligibility.pdf>



# **Drug Overdose Response & Decriminalization Update**

Death Year	Number of Deaths	Rate of Deaths (per 100,000 people)
2013	334	7.2
2014	370	7.9
2015	529	11.1
2016	995	20.5
2017	1495	30.3
2018	1561	31.2
2019	989	19.4
2020	1775	34.4
2021	2305	44.2
2022	2375	44.7
2023	1836	45.3

11

## Illicit Drug Toxicity Deaths & Death Rates by LHA of Injury (2016- Aug 2023)

Unregulated Drug Deaths by LHA of Injury, 2016-2022 \*\*\*DATA TO AUG 2023

LHA Name	2016	2017	2018	2019	2020	2021	2022	2023
Bella Coola Valley								
Central Coast								
Howe Sound	3	8	6	2	2	9	5	3
North Vancouver	13	18	16	12	22	18	20	14
Powell River	7	5	9	6	12	17	11	6
Richmond	14	28	12	13	19	33	27	15
Sunshine Coast	3	7	6	3	7	12	9	6
Vancouver - Centre North	139	186	214	149	251	302	326	252
Vancouver - City Centre	36	84	68	44	64	86	111	89
Vancouver - Midtown	16	39	35	18	38	49	48	29
Vancouver - Northeast	13	25	38	17	24	39	37	32
Vancouver - South	15	30	31	13	31	35	38	22
Vancouver - Westside	12	9	11	6	11	16	9	5
West Vancouver/Bowen Island	5	6	6	3	7	6	7	4

Source: Statistical Reports on Deaths in British Columbia: Available at: <https://app.powerbi.com/view?r=eyJrIjojZWZmZjA4MTQ0ZDdmZS00MzZmLWE2NDQ0NTNmZjZkzOTY4NTImlwiidCI6IjZmZGI1MjAwLWtnkMGQ0tGE4YS1iMDM2LWQwZnJlZTM1OWFkYyJ9>



Outreach & Intensive Case Management Teams  
 Mental Health Services, Harm Reduction Services, Outreach Services, Cultural Supports  
 Emergency Departments, Acute Care, VCH Primary Care Clinics & Urgent Primary Care Centres, Community Health Centres  
 Decriminalization/Policy Changes

# Restricting Public Consumption of Illegal Substances Act

- 8<sup>th</sup> November - new legislation regarding use of substances in certain public & recreation-focused areas:
  - a six-metre radius from building entrances, including businesses and residential buildings;
  - within six metres of a bus stop;
  - within 15 metres of playgrounds, spray and wading pools, and skate parks; and
  - at parks, beaches and sports fields.
- Follows decriminalization of possession of small amounts of specific substances for personal use in BC
- Requires a local government to consult local Medical Health Officer before considering a proposed bylaw relating to the consumption of an illegal substance in public
- Opportunity for local governments and Public Health to continue working together on drug overdose response, to avoid further marginalization of people who use drugs
- Monitoring & evaluation: criminalization and stigma; experiences of people who use drugs; changes in interactions with police; possession offences after decriminalization

Source:

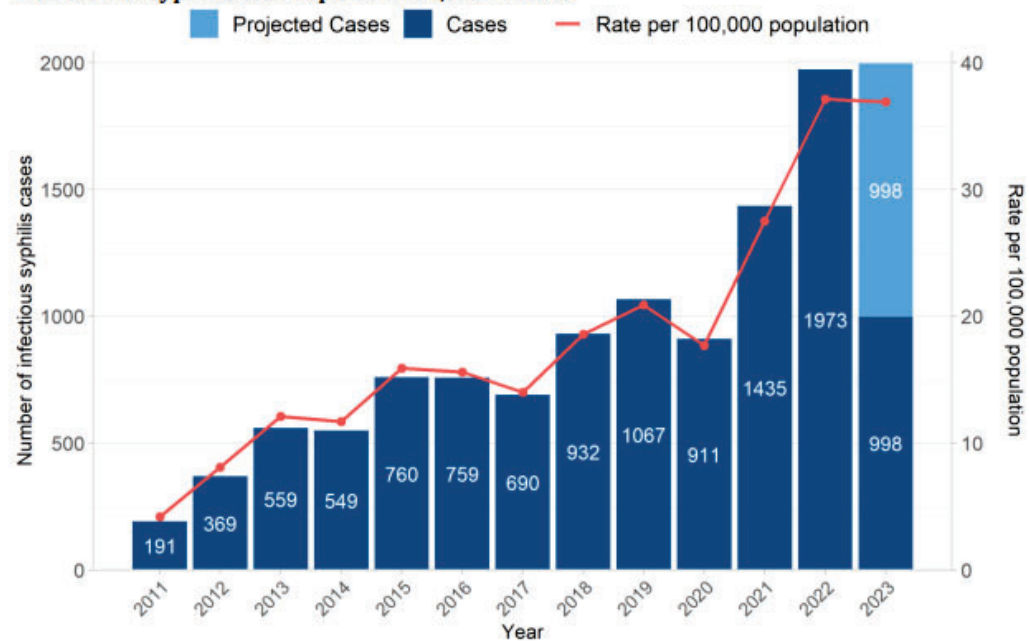
<https://www.leg.bc.ca/parliamentary-business/legislation-debates-proceedings/42nd-parliament/4th-session/bills/progress-of-bills>

[https://www2.gov.bc.ca/assets/gov/health/mental-health/building\\_a\\_mental\\_health\\_and\\_substance\\_use\\_system\\_of\\_care\\_snapshot.pdf](https://www2.gov.bc.ca/assets/gov/health/mental-health/building_a_mental_health_and_substance_use_system_of_care_snapshot.pdf)

# **Communicable Disease – Syphilis**

## Infectious Syphilis in British Columbia

### 1. Infectious syphilis case reports in BC, 2011-2023\*

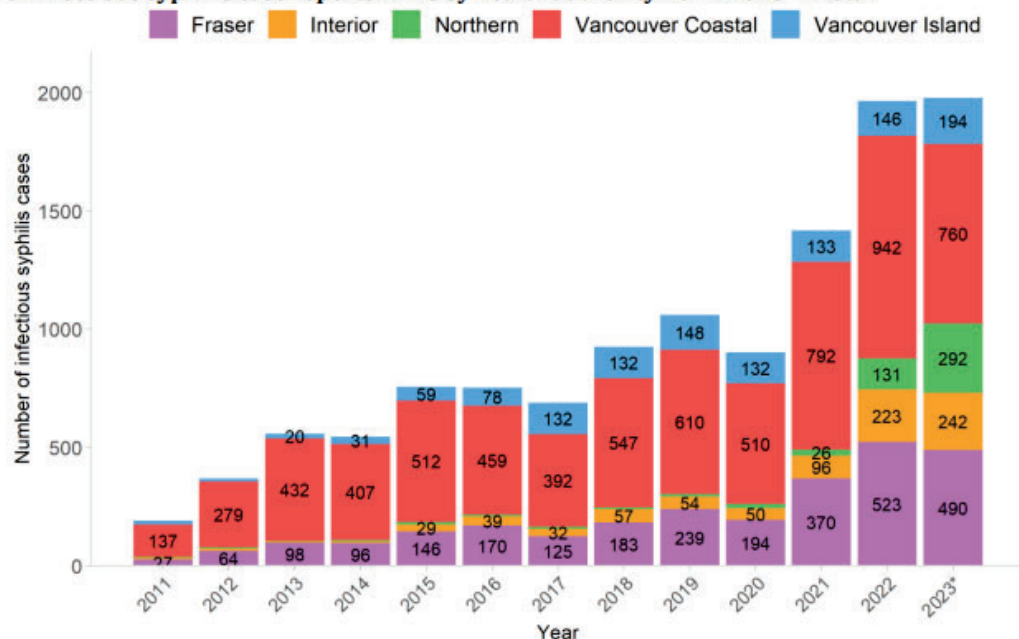


\*Projected case counts/rates assume that the average number of reported cases per month year to date (YTD) will remain constant throughout 2023. See technical appendix (calculations) for more details.

Note: 2018 to 2023 case counts are subject to change. Infectious syphilis case reports exclude congenital syphilis cases.

## Infectious Syphilis by Health Authority

8. Infectious syphilis case reports in BC by health authority 2011-2023\* - Total



\*Projected case counts.

Note: Excludes missing and unknown geography. Counts are shown for case counts >=20.

Source: [http://www.bccdc.ca/resource-gallery/Documents/Statistics%20and%20Research/Statistics%20and%20Reports/STI/Syphilis\\_indicators\\_2023Q2.pdf](http://www.bccdc.ca/resource-gallery/Documents/Statistics%20and%20Research/Statistics%20and%20Reports/STI/Syphilis_indicators_2023Q2.pdf)

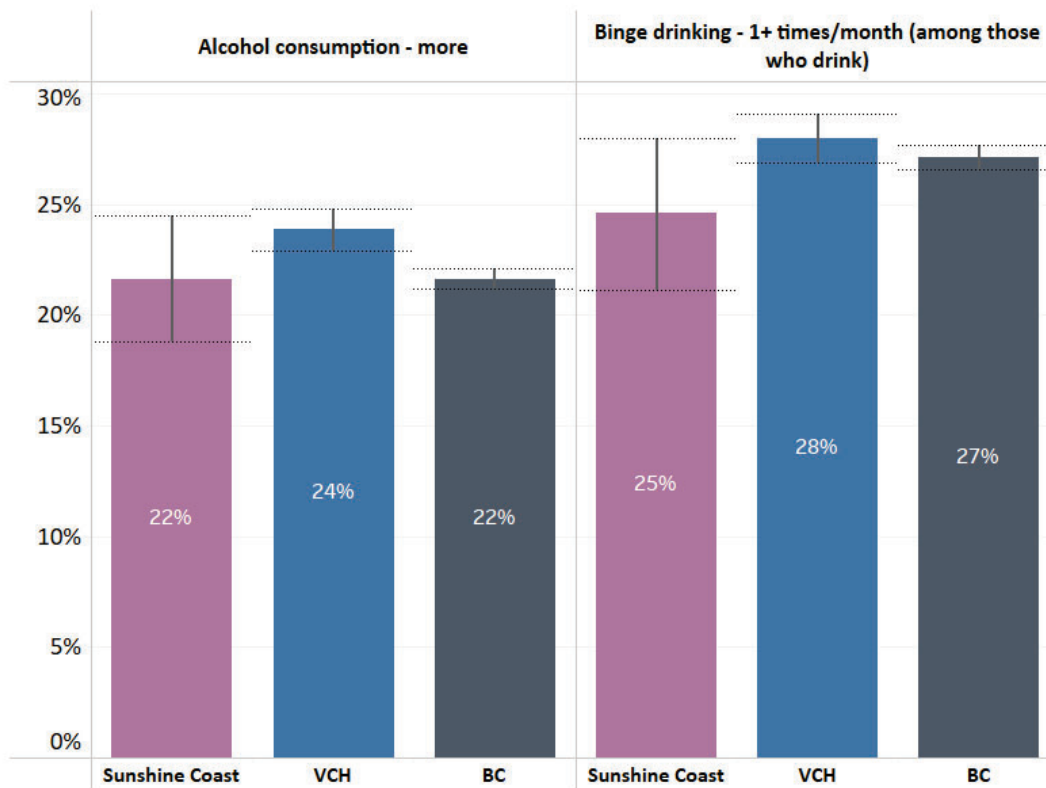
### Response plan includes:

- Engagement with key communities
- Improving understanding of the drivers of syphilis
- Developing novel primary prevention strategies
- Increasing awareness of syphilis and sexual wellbeing
- Increasing testing for syphilis
- Improving access to culturally safe care for syphilis
- Optimizing the care of contact/partners
- Enhancing surveillance of syphilis



# **Alcohol & Related Harms**

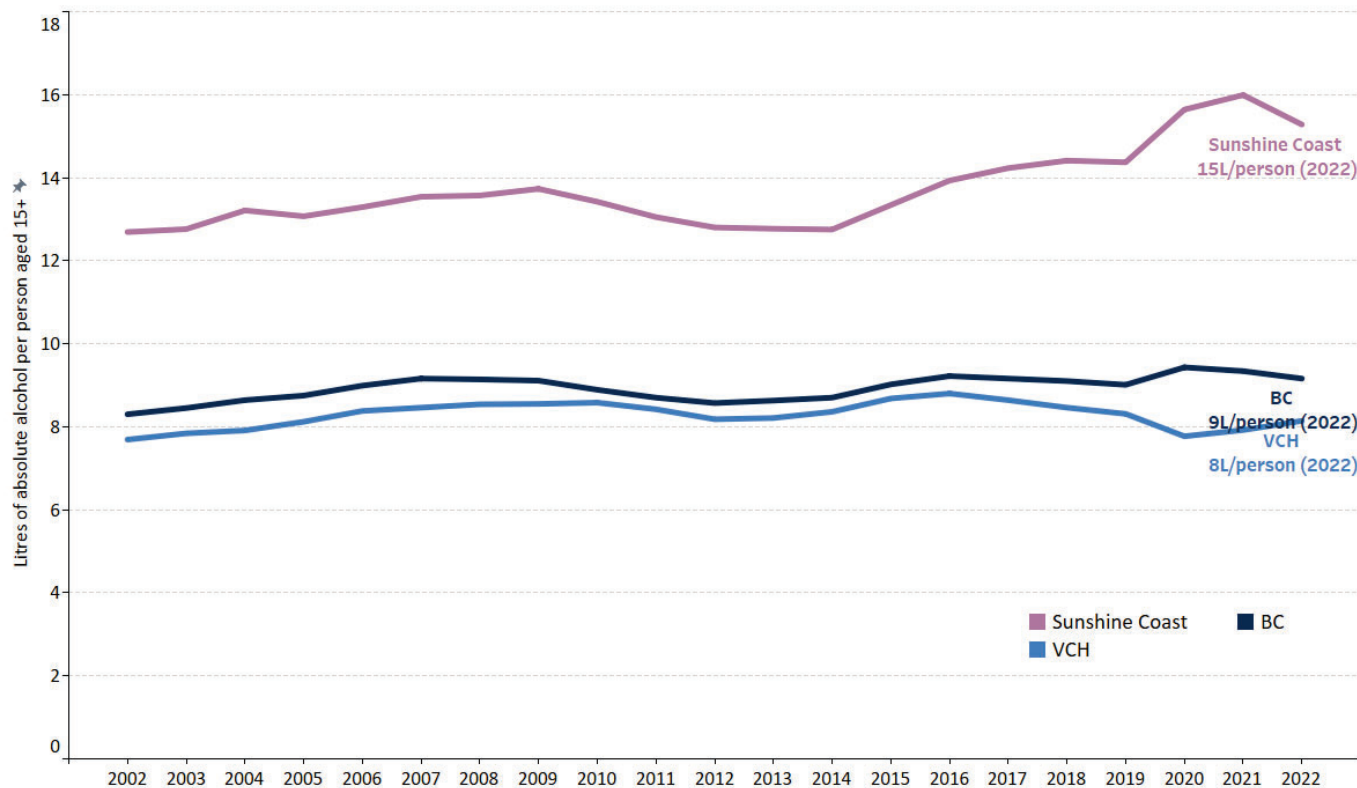
## Alcohol consumption and binge drinking – BC SPEAK Survey Round 2 Sunshine Coast (LHA) compared to VCH and BC



Increased rate of alcohol consumption and binge drinking among Sunshine Coast residents (similar to VCH and BC)

Source: BC COVID-19 SPEAK Population Health Survey Round 2.

## Annual per capita alcohol consumption based on sales data Sunshine Coast (LHA) compared to VCH and BC, 2002-2022



Note: 1 Litre of absolute Alcohol = 58.65 Standard Drinks. Estimates are based on the sales data.

### On average in 2022:

- Sunshine Coast residents had **15L of alcohol** per person, which is equivalent to **17 drinks/week**
- VCH residents had **8L of alcohol** per person, which is equivalent to **9 drinks/week**
- BC residents had **9L of alcohol** per person, which is equivalent to **10 drinks/week**



Evidence. Engagement. Impact.

## Risks associated with alcohol use

- Cancer incl. breast & colon cancer
- Heart disease, high blood pressure, stroke
- Liver disease
- Injuries & Violence
- Mental Health
- Inflammation of the gastrointestinal system
- Alcohol dependence
- Fetal alcohol syndrome (FAS) and pre-term birth complications
- Death

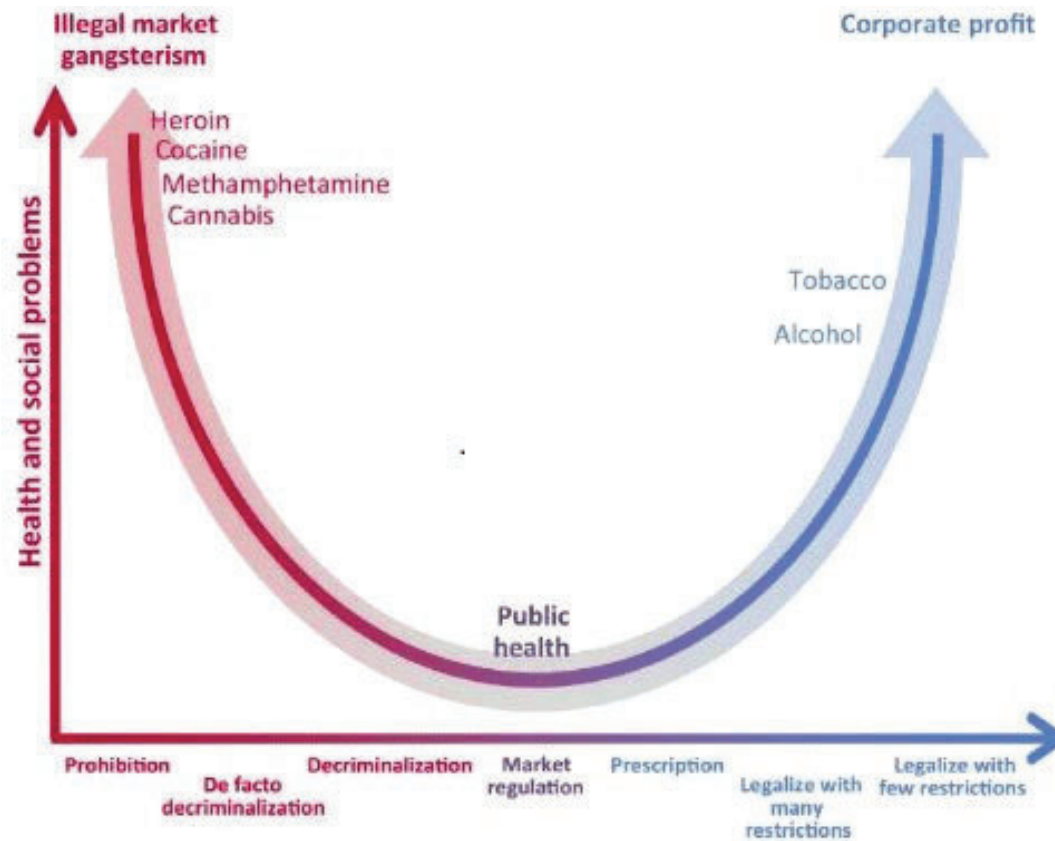
Source: Canadian Centre on Substance Use and Addiction (2023). Available at: <https://www.ccsa.ca/canadas-guidance-alcohol-and-health#:~:text=To%20help%20them%20make%20an,moderate%20risk%20of%20harm%20and> and WHO. (2023). Alcohol Fact Sheet. Available at: <https://www.who.int/news-room/fact-sheets/detail/alcohol>

# Canada's Guidance on Alcohol and Health – January 2023

## Alcohol consumption per week

<b>0 drinks per week</b> Not drinking has benefits, such as better health, and better sleep.	No risk	0
<b>1 to 2 standard drinks per week</b> You will likely avoid alcohol-related consequences for yourself and others.	Low risk	1 2
<b>3 to 6 standard drinks per week</b> Your risk of developing several different types of cancer, including breast and colon cancer, increases.	Moderate risk	3 4 5 6
<b>7 or more standard drinks per week</b> Your risk of heart disease or stroke increases.  <b>Each additional standard drink</b> Radically increases the risk of these alcohol-related consequences.	Increasingly high risk	7 8 +
<b>A standard drink means:</b> <div> <b>Beer</b> 341 ml (12 oz) of beer 5% alcohol           </div> or <div> <b>Cooler, cider, ready-to-drink</b> 341 ml (12 oz) of drinks 5% alcohol           </div> or <div> <b>Wine</b> 142 ml (5 oz) of wine 12% alcohol           </div> or <div> <b>Spirits</b> (whisky, vodka, gin, etc.) 43 ml (1.5 oz) of spirits 40% alcohol           </div>		

# The Public Health Approach



Source: Canadian Public Health Association (2014). A New Approach to Managing Illegal Psychoactive Substances in Canada. Available at: [https://www.cpha.ca/sites/default/files/assets/policy/ips\\_2014-05-15\\_e.pdf](https://www.cpha.ca/sites/default/files/assets/policy/ips_2014-05-15_e.pdf)

**THANK YOU  
&  
ACKNOWLEDGEMENTS**