

SCRD Cemetery Master Plan



Presentation to Committee of the Whole

July 28, 2022



Introductions

LEES+Associates: We are Canada's premier specialist cemetery planning and design firm



Richard Cook
Principal



Jennifer Thibert
Business Manager



Lacey Barr
Landscape Architect



Christen Oakes
Landscape Designer

SCRD's Cemeteries

- Seaview Cemetery is the SCR D's only active cemetery.
- Mt Elphinstone Pioneer Cemetery is currently closed, and
- Kleindale Cemetery was closed to burials in 1982

"Show me the manner in which a nation cares for its dead and I will measure with mathematical exactness the tender mercies of its people, their respect for the laws of the land, and their loyalty to high ideals."

-Sir William Gladstone

The Need For the Cemetery Master Plan

- **There is an urgent need to develop a new supply of graves before Seaview Cemetery runs out.**
- SCRD communities are set to grow by 10% over the next 25 years.
- The death rate is expected to increase from 11 to 12 deaths per 1000 people.
- Seaview Cemetery is running out of developed burial inventory. There is:
 - 2-3 years of traditional in-ground casket lots
 - 2-3 years of columbaria (cremation) niches;
 - 30-35 in-ground cremation lots

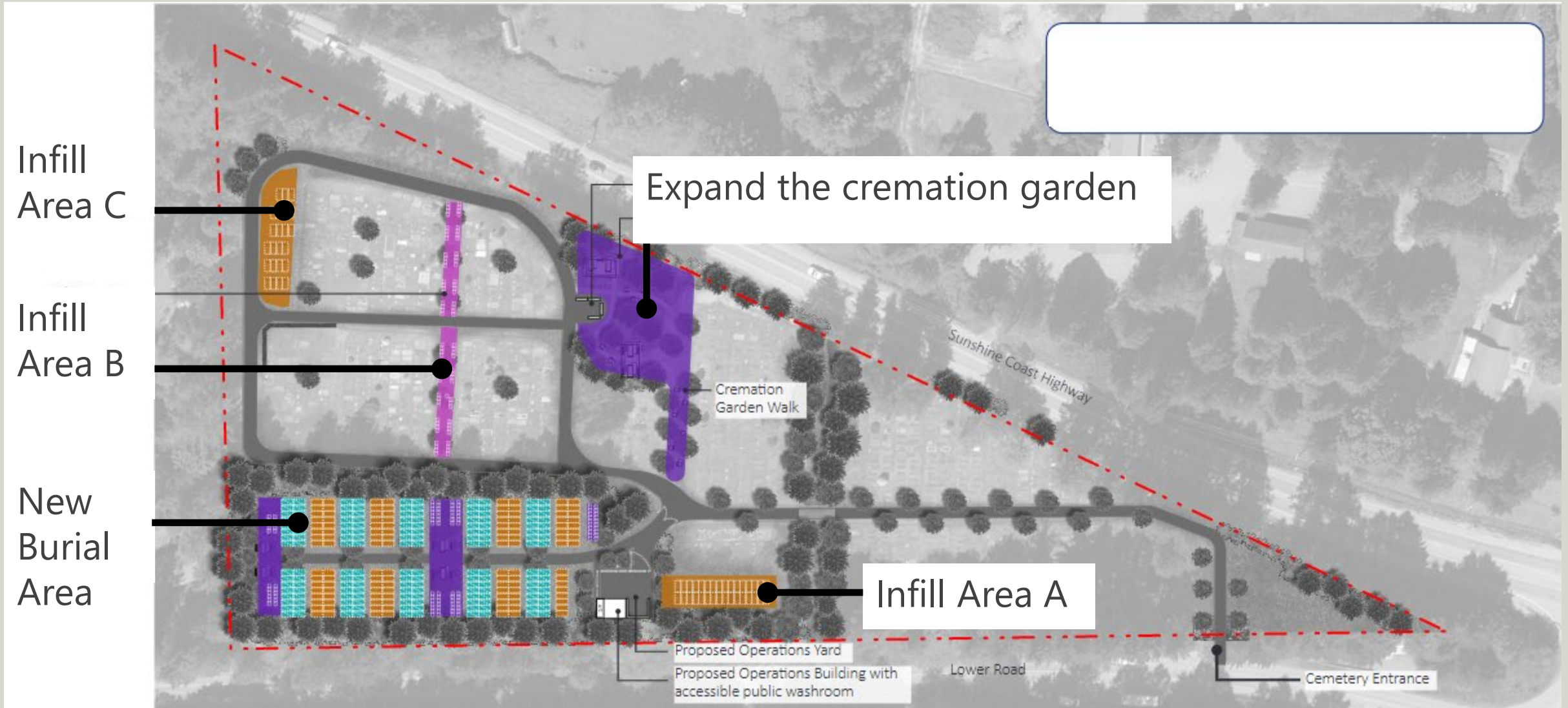
The Need For the Cemetery Master Plan

- Over the next 25 years SCRD is expected to sell approximately:
 - 550 in-ground casket lots
 - 175 columbaria (cremation) niches
 - 210 in-ground cremation lots

Seaview Cemetery and Land Acquisition Recommendations

- **Increase the supply of graves at Seaview Cemetery by:**
 - Developing areas A, B and C, to provide +/- 2 years full body casket burial capacity
 - Expanding the existing Cremation Garden to provide +/- 15 years columbaria (cremation) niche capacity, and
 - Creating a new burial area on the undeveloped lands in the southwest corner to provide +/- 15years full body casket burial capacity
- **Begin the land acquisition process to purchase new cemetery lands to provide capacity for the 100+ year horizon**

Seaview Cemetery Infill Areas



Seaview Cemetery Cremation Garden Expansion

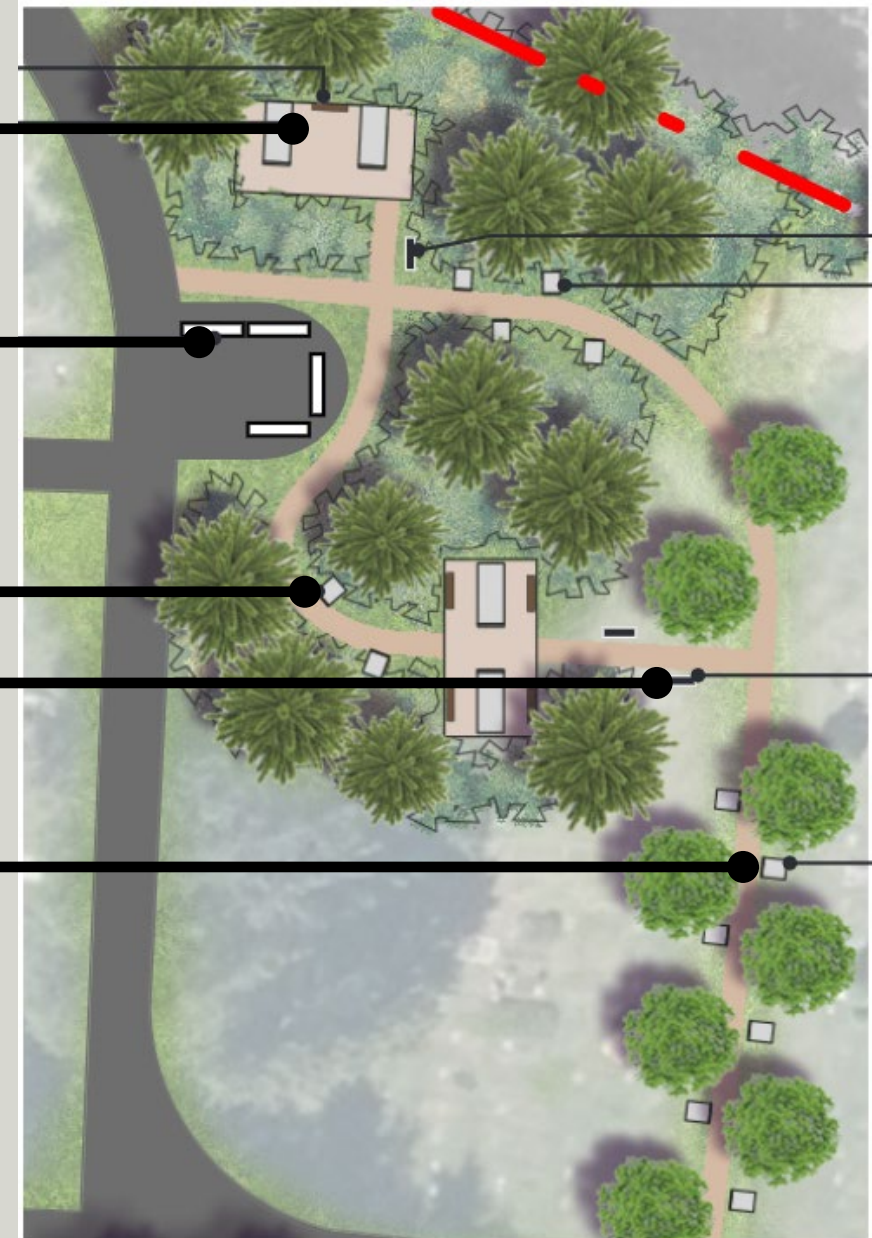
Community columbaria

Existing columbaria

Family Vessels

Memorial Wall

Family columbaria



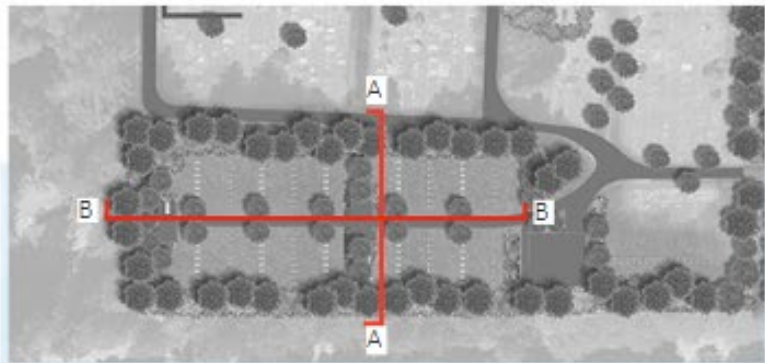
Seaview Cemetery Southwest Expansion Area

- In-ground Casket lots: 10-15 years
- In-ground cremation lots: 10-15 years
- Columbaria Niches: 35-40 years

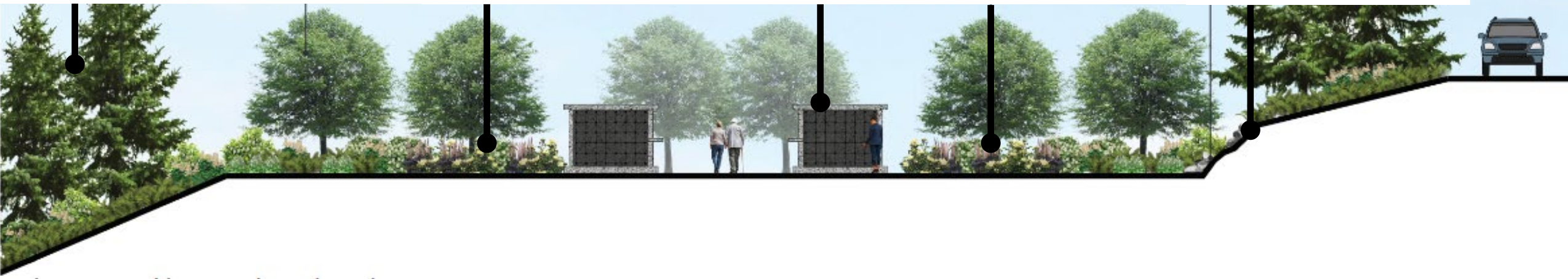
Green Burial Area Cremation Garden Operations Building and Yard



Seaview Cemetery Southwest Expansion Area



Woodland buffer planting Scattering Columbaria Scattering Retaining wall



Seaview Cemetery Recommendations

Cemeteries are becoming increasingly park-like to communities. Improve the landscape standard by :

- Enhancing the main entrance gate and sign
- Providing an information kiosk with cemetery map
- Improve the cemetery driveway surfaces
- Provide benches and bins
- Plant new trees to protect and buffer the cemetery from the highways
- Control the impacts of the creek on adjacent graves

Seaview Cemetery Recommendations

Cemeteries are becoming increasingly park-like to communities. Improve the landscape standard by :

- Enhancing the main entrance gate and sign
- Providing an information kiosk with cemetery map
- Improve the cemetery driveway surfaces
- Provide benches and bins
- Plant new trees to protect and buffer the cemetery from the highways
- Control the impacts of the creek on adjacent graves

Mt Elphinstone Pioneer Cemetery Recommendations

Pros:

- A beautiful tranquil parkland

Cons:

- The land is too steep and rocky for traditional cemetery development

Opportunity:

- Develop small cremation gardens and green burial areas in a series of phases

Or

- Improve its amenity value as a parkland for the community

Mt Elphinstone Pioneer Cemetery Concept Diagram

LEFS
ASSOCIATES

Existing
Cemetery

Scattering Walk
and Memorial Trail

Sunshine Coast RV
Park

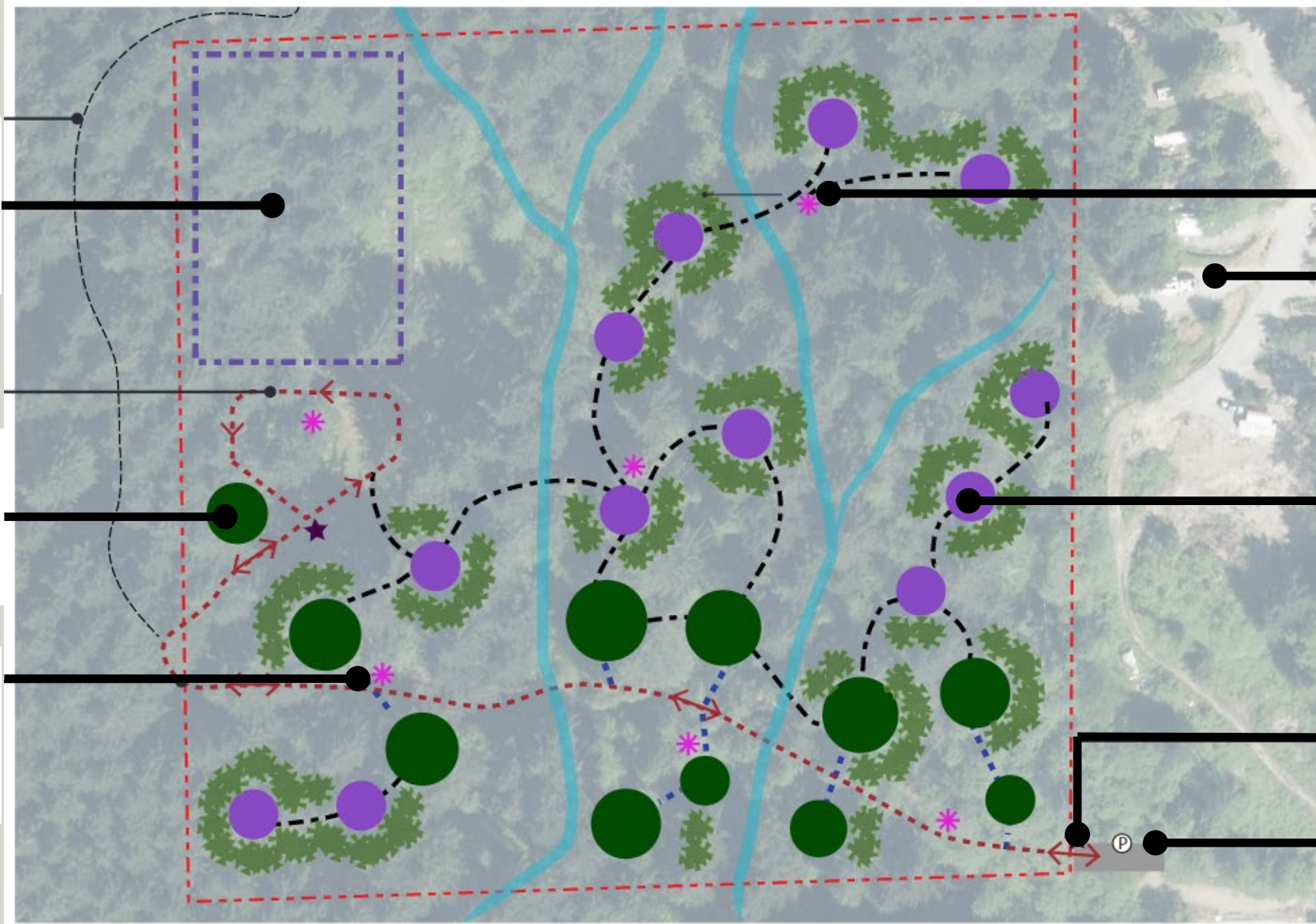
Small Cremation
Garden

New entry Gate,
Sign, Information
Kiosk

Upgrade driveway,
parking lot

Small
Green
Burial Area

Small
Gathering
Space



July 28, 2022

Operational Recommendations

- Update the cemetery bylaw
- Educate families on the rules regarding grave adornments
- Do a business plan including a review of the Perpetual Care Fund
- Use the Stone Orchard cemetery software to track work and manage operational costs more effectively, and better integrate it with SCRD's financial and mapping systems
- All aimed at improving long term financial sustainability

Summary

Essential Recommendations to implement:

- Provide more burial capacity at Seaview Cemetery
- Begin the land acquisition process to obtain sufficient land to last 100+ years
- Implement Bylaw update, Business Plan, Education, Systems integration

Non-Essential to implement:

- Explore viability of developing cremation and Green Burial options at Mt Elphinstone Cemetery
- Improve parking, entry gates, trails, historic interpretive signage



Thank you!
Questions?

Seaview Cemetery Concept

