



EVACUATION ORDER EXPANDED

**Sunshine Coast Regional District
September 17, 2023 - Effective
Immediately**

Pursuant to Section 12 (1) of the *Emergency Program Act*, an **Evacuation Order** has been issued by the Sunshine Coast Regional District Emergency Operations Centre (EOC), effective immediately because of the potential danger to life and safety due to the **Clowhom wildfire**.

An **Evacuation Order** is now in effect for the following properties in **Electoral Area B** (see attached map):

- PID 015-913-074
- PID 015-921-590
- PID 015-803-406
- PID 015-887-332
- PID 015-887-367
- PID 015-887-383
- PID 015-921-646
- PID 029-756-171
- PID 029-756-189
- PID 028-840-895

An **Evacuation Alert** is now in effect for the following properties in **Electoral Area B** (see attached map):

- PID 015-887-324
- PID 015-887-359

SEE ATTACHED MAP for affected areas

WHAT YOU SHOULD DO

For those on Evacuation Order:

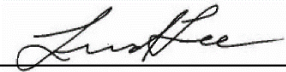
- YOU MUST LEAVE THE AREA IMMEDIATELY
- If you need transportation assistance from the area, advise the person providing this notice or call 604 740 1077.
- Shut off all gas and electrical appliances, other than refrigerators and freezers.
- Close all windows and doors.
- Close gates (latch) but do not lock.
- Gather your family and, if you have room, take a neighbour or someone needing transportation. Do not use more vehicles than you have to.
- Take critical items (medicine, purse, wallet, and keys) only if they are immediately available. Take pets in pet kennels or on leash.
- Do not use the telephone unless you need emergency service.

For those on Evacuation Alert:

An Evacuation Alert has been issued to prepare you to evacuate your premises or property should it be found necessary. Residents will be given as much advance notice as possible prior to evacuation; however you may receive limited notice due to changing conditions. In the meantime, you should:

- Locate all family members and designate a meeting area outside the evacuation area, should an Evacuation Order be called while separated.
- Pack essential items such as government-issued ID, medications, eyeglasses, valuable papers (e.g. insurance, credit, and mortgage information), immediate care needs for dependents and, if time and space permits, keepsakes for quick departure.
- Prepare to move disabled persons, children and/or neighbours, if assistance is needed.
- Prepare to take pets with you and move livestock to a safe area (if possible).
- Arrange transportation for all your household members. Fill the gas tanks of personal vehicles.
- Arrange accommodation for all members of the residence, if possible.
- Wait for an Evacuation Order to be issued before evacuating. Monitor www.scrd.ca for information on evacuation orders and location of Reception Centres.

Further information will be issued as updates are received. Please monitor www.scrd.ca for more information or call 604-741-2239.

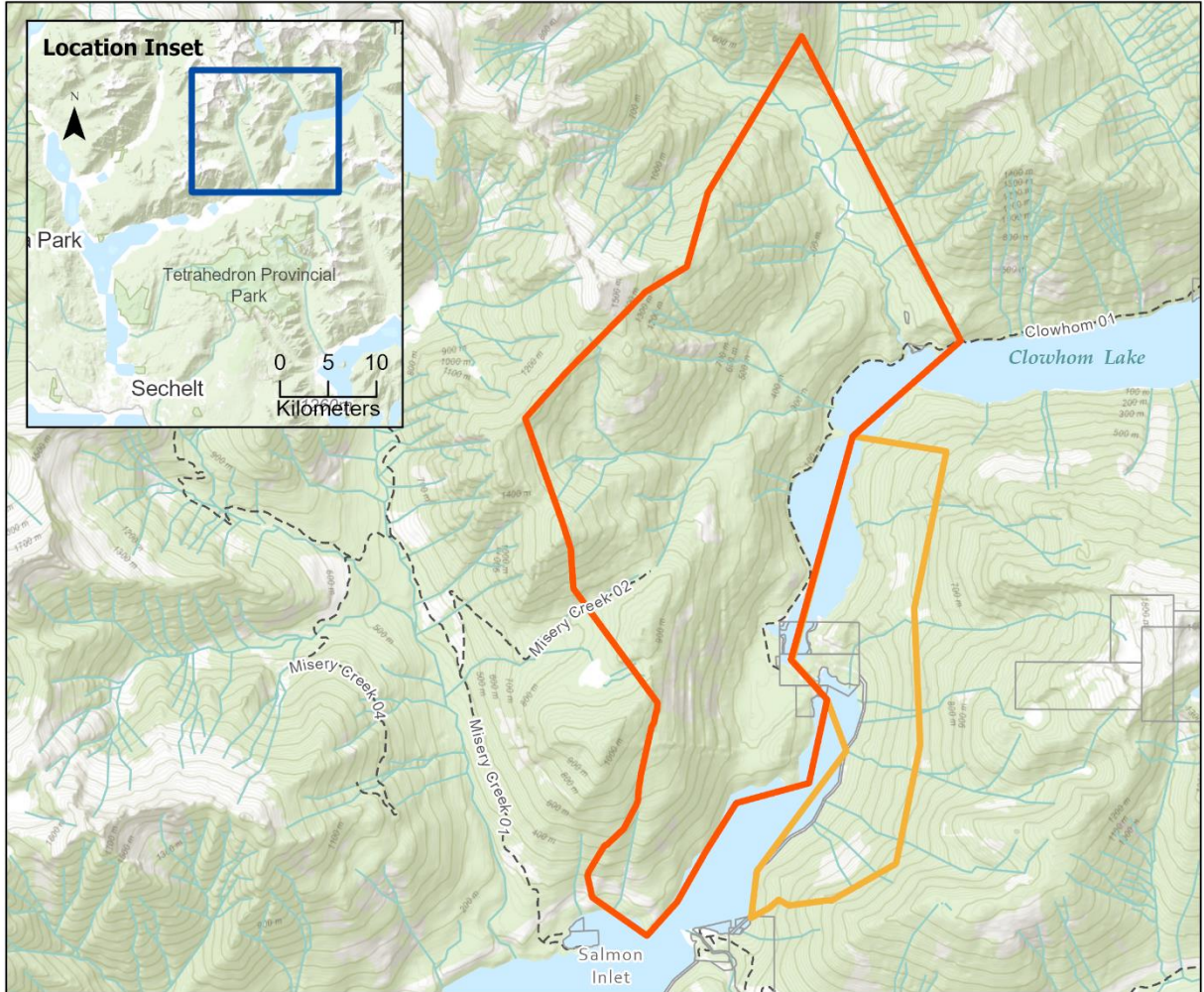


Leonard Lee, Board Chair
Sunshine Coast Regional District

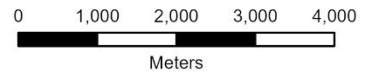


EVACUATION ORDER and ALERT

Date: 17-Sep-23



- Evacuation Order
- Evacuation Alert
- Parcels
- Forest Service Roads



This information has been compiled by the Sunshine Coast Regional District (SCRD) using data derived from a number of sources with varying levels of accuracy. The SCR D disclaims all responsibility for the accuracy or completeness of this information.