

**Communication Protocol
(The Protocol)**

Between:

**The Sunshine Coast Regional District
(SCRD)**

And

**BC Timber Sales Strait of Georgia Business Area
(BCTS)**

(Collectively the Parties)

Preamble:

- A.** BC Timber Sales plays an integral role in the implementation of government's Forestry Revitalization Plan and supports the Ministry of Forests Lands and Natural Resource Operations (FLNRO) goal of providing British Columbians with sustainable benefits from the commercial use of public forests.
- B.** BC Timber Sales is a stand-alone organization within the FLNRO created to develop Crown timber for public auction to establish market price and cost benchmarks, and to capture the value of the timber asset for the public.
- C.** High-quality forest and environmental management practices are integral to the BCTS mandate and the way it conducts business.
- D.** BCTS manages timber assets in designated forest development plan units on the Sechelt Peninsula.
- E.** BCTS has an approved Forest Stewardship Plan and a Sunshine Coast Timber Supply Area volume apportionment which provide the legal authority to conduct harvesting activities within their designated forest development plan units.
- F.** The Sunshine Coast Regional District (SCRD) is the local government serving the residents of the Sunshine Coast and provides a forum for the representation of regional residents and communities and acts as a vehicle for advancing the interests of the region as a whole.
- G.** A communication protocol will provide the SCRDR an opportunity to review and comment on proposed BCTS harvesting plans and demonstrate to its constituents that it has awareness and knowledge concerning BCTS forest practices.

- H. A communication protocol will benefit BCTS by identifying important non-timber resources and community values so that BCTS planners can address them during the planning and conduct of forest operations.
- I. This Protocol is intended to assist in achieving stability and greater certainty for BCTS and to provide the SCRD the opportunity for early and meaningful involvement while BCTS plans are in formation.
- J. This Protocol is intended to strengthen the relationship between the SCRD and BCTS, based on effective working relationships, mutual respect and accountability.

THEREFORE THE PARTIES AGREE AS FOLLOWS:

1. Definitions

For the purposes of this Agreement, the following definitions apply:

- i. **“Operational Plan”** means a set of 1:20,000 scale map sheets depicting the timber harvesting land base, various forest attributes, existing and proposed roads, proposed cut-blocks, active and completed timber sales.
- ii. **“Timber Harvesting Land Base”** means the portion of the total land area of a management unit considered by the Ministry of FLNRO to contribute to and be available for long term timber supply.
- iii. **“Timber Sale licence”** means a defined area of timber subject to disposition provisions under the Forest Act within which timber harvesting activities are authorized by the timber sales manager.
- iv. **“Timber Sales Manager”** means the delegated decision maker with authority to make statutory decisions with respect to forest and range resources under provincial legislation.
- v. **“Sales Schedule”** means a schedule of timber sales intended for disposition by BCTS for a particular fiscal year. The schedule provides BCTS clients and other Parties advance notice of timber sale tenders.

2. Purpose and Objectives

The Purpose and Objectives of this Communication Protocol are:

- i. Assist with building a government to government relationship that will guide BCTS and SCRD engagement across a range of business focused on land and natural resource management in an efficient, effective and responsive manner for both Parties.

3. Scope and Parts of this Protocol

- i. This Protocol consists of sections 1 to 7, and Appendices A, B and C.
- ii. This Protocol is in effect within the boundaries outlined in the attached Appendices.
 - a. Appendix A – Map of the Sunshine Coast Community Interface Area (SCCIA).
 - b. Appendix B – Map of BCTS Community Watershed Operating Areas
 - c. Appendix C – Map of BCTS Mt Elphinstone Operating Areas.
- iii. Land Use interests pertaining to Protected Area and Park creation or advancing moratoriums on Old Growth harvesting need to be addressed through other government planning processes and is beyond the scope of this Agreement.

4. Communication Process - BCTS to SCRD

- i. In order to facilitate enhanced communications concerning BCTS forest operations, BCTS agrees to provide the SCRD Planning Department (SCRD) with their operational plans for the Sunshine Coast Community Interface Area (SCCIA), designated community watersheds and Mt. Elphinstone in a timely manner.
- ii. Operational plans will identify proposed harvest areas (timber sales) and associated access roads intended for disposition over a two to three year period.
- iii. Amendments and updates to operational plans are prepared periodically. BCTS will refer all new cut-block and road projections to the SCRD for review and comment.
- iv. BCTS will convey operating plans in digital PDF format. Sufficient and understandable information will be provided by BCTS to enable the SCRD to make informed comment.
- v. Meetings to clarify and resolve issues where possible may be advantageous at times and may be called by either party. Meetings will be held at the SCRD office in Sechelt on mutually agreed to dates and in exceptional circumstances may include field trips. The scope of the meetings will include discussions of timber sale and road construction projects at least one year in advance of operations.
- vi. A 90 calendar day referral period will be the normal track for operational plan review and comment.
- vii. BCTS will document and respond to SCRD comments demonstrating that it understands the issues and has fully considered them.
- viii. BCTS will post its Sales Schedule on their corporate website and will advise the SCRD when the schedule is posted. The schedule will identify the current fiscal

year's timber sale disposition plan and provide advance notice on the location, size, species profile and tender timing of timber sales.

5. Communication Process - SCRD to BCTS

- i. The SCRD intends to participate in any referral or information sharing with BCTS in relation to proposed BCTS operational plans.
- ii. The SCRD will provide BCTS information concerning recreational projects, infrastructure projects and information concerning other SCRD interests on the shared land-base.
- iii. The SCRD will communicate the nature of any possible impacts on SCRD interests as a result of proposed BCTS road and cut-block locations.
- iv. The SCRD may share BCTS operational plans with internal SCRD committees such as the Natural Resources Advisory Committee (NRAC), Planning and Development Committees and interested members of the public. Information/Comments derived through the circulation of BCTS operating plans to the groups noted above will be summarized into a response by the SCRD Planning Department prior to delivery to BCTS.
- v. The SCRD will maintain an awareness of the BCTS Strait of Georgia Business Area "Sales Schedule" posted on the BCTS corporate website for information concerning impending Timber Sale dispositions occurring within the consultative areas.

6. Termination

- i. This Protocol may be terminated should either Party feel the protocol is no longer necessary or not meeting their interests. Upon making such a determination, three months written notice will be provided by the terminating Party and a meeting will be held prior to termination of this agreement. This document will remain in effect until terminated.

7. Amendment of Protocol

- i. Any alteration or amendment to the terms and conditions of the Protocol must be in writing and duly executed by the Parties.

June 2, 2014

Signed on behalf of:

Sunshine Coast Regional District



Garry Nohr, Chair

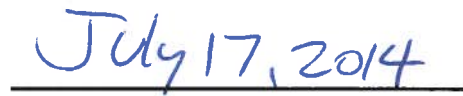


Date

BC Timber Sales



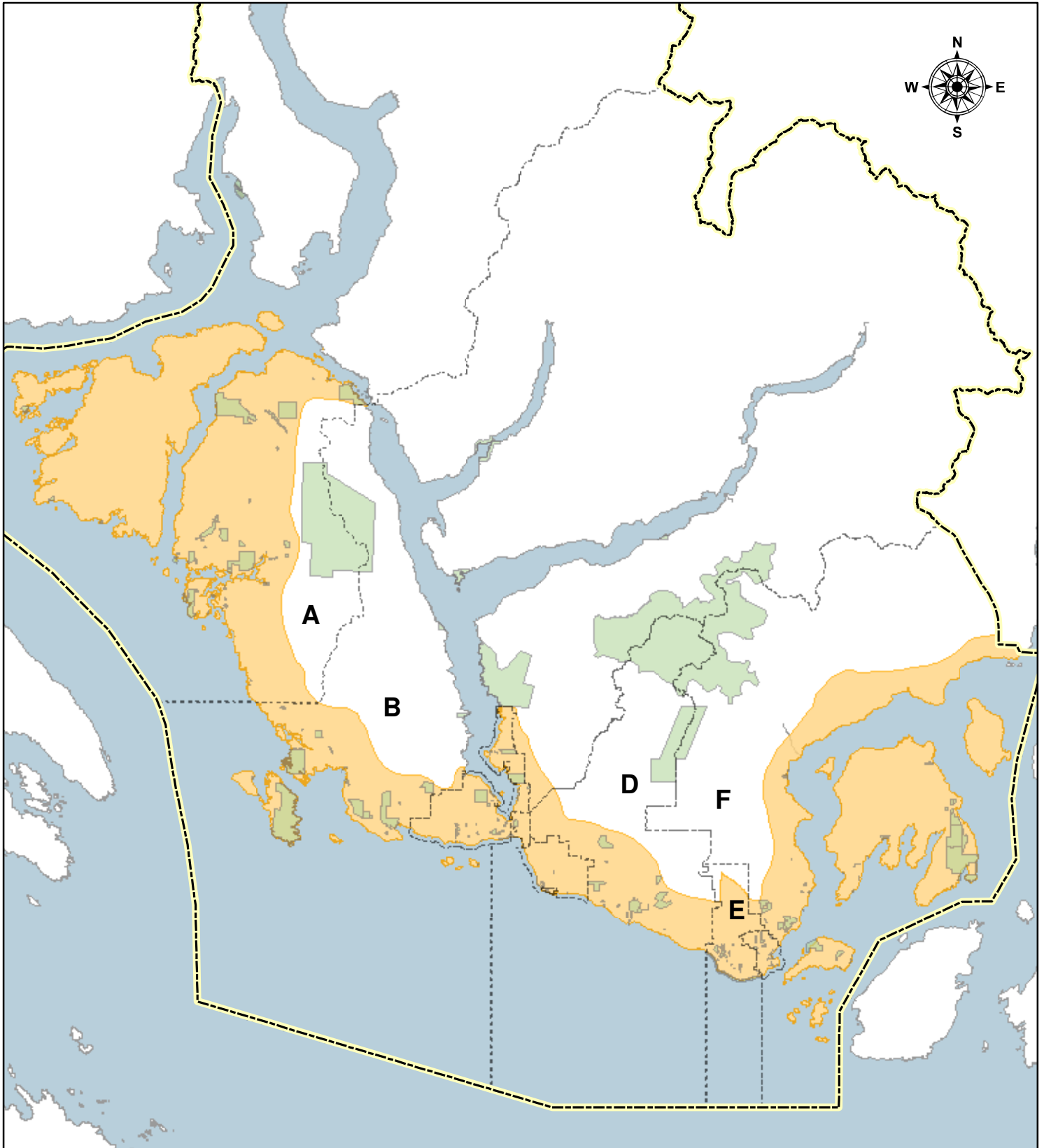
Don Hudson, Timber Sales Manager



Date

Sunshine Coast Regional District Proposed Community Interface Areas

APPENDIX A



Sunshine Coast
Regional District

June, 2013

 SCR D Boundary

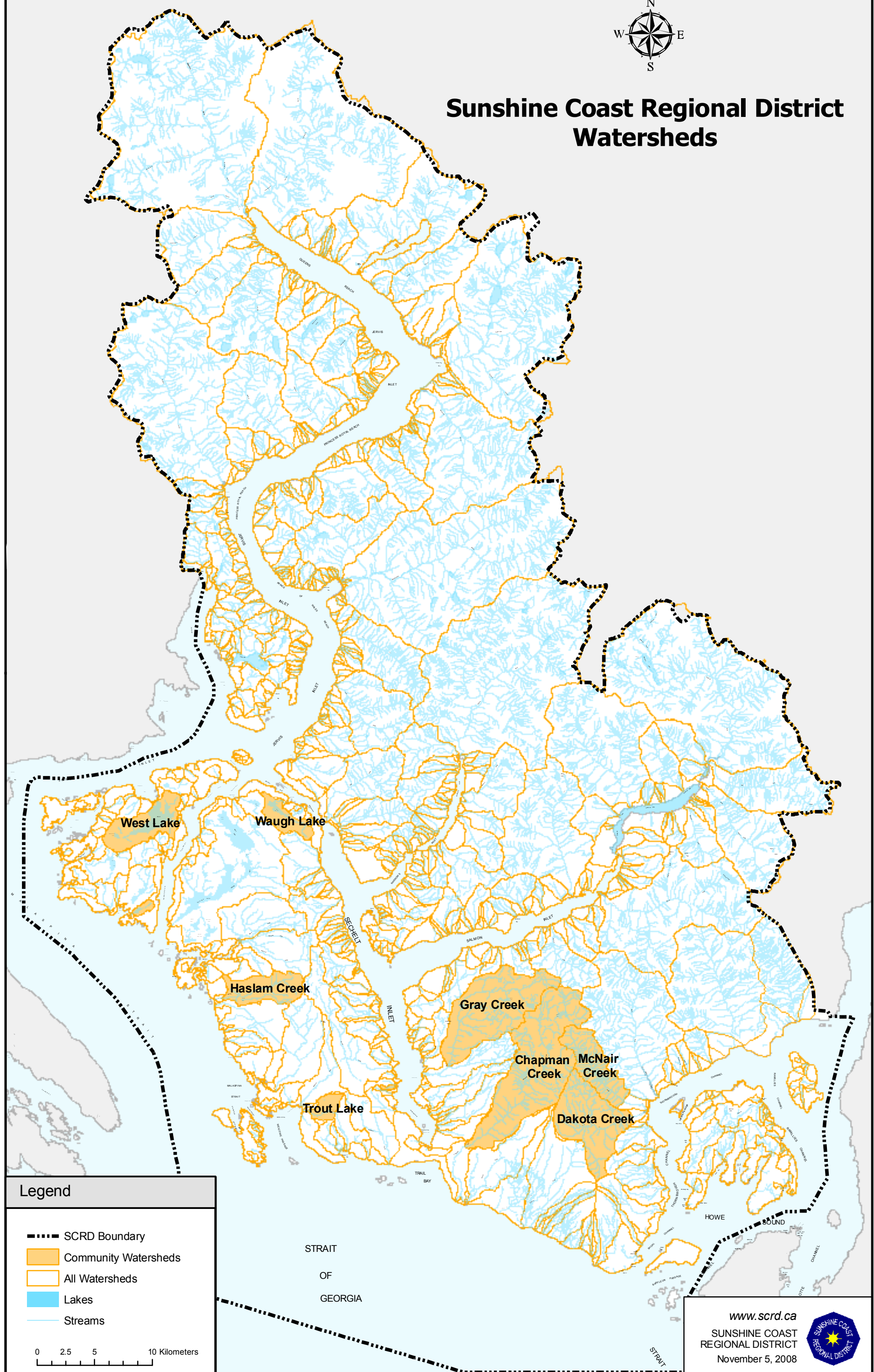
 Parks

 Electoral Areas

 Community Interface Area



Sunshine Coast Regional District Watersheds



Legend

- SCRD Boundary
- Community Watersheds
- All Watersheds
- Lakes
- Streams

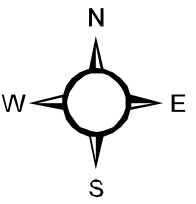
0 2.5 5 10 Kilometers

www.scrd.ca
 SUNSHINE COAST
 REGIONAL DISTRICT
 November 5, 2008



BCTS
 BC Timber Sales
 Strait of Georgia

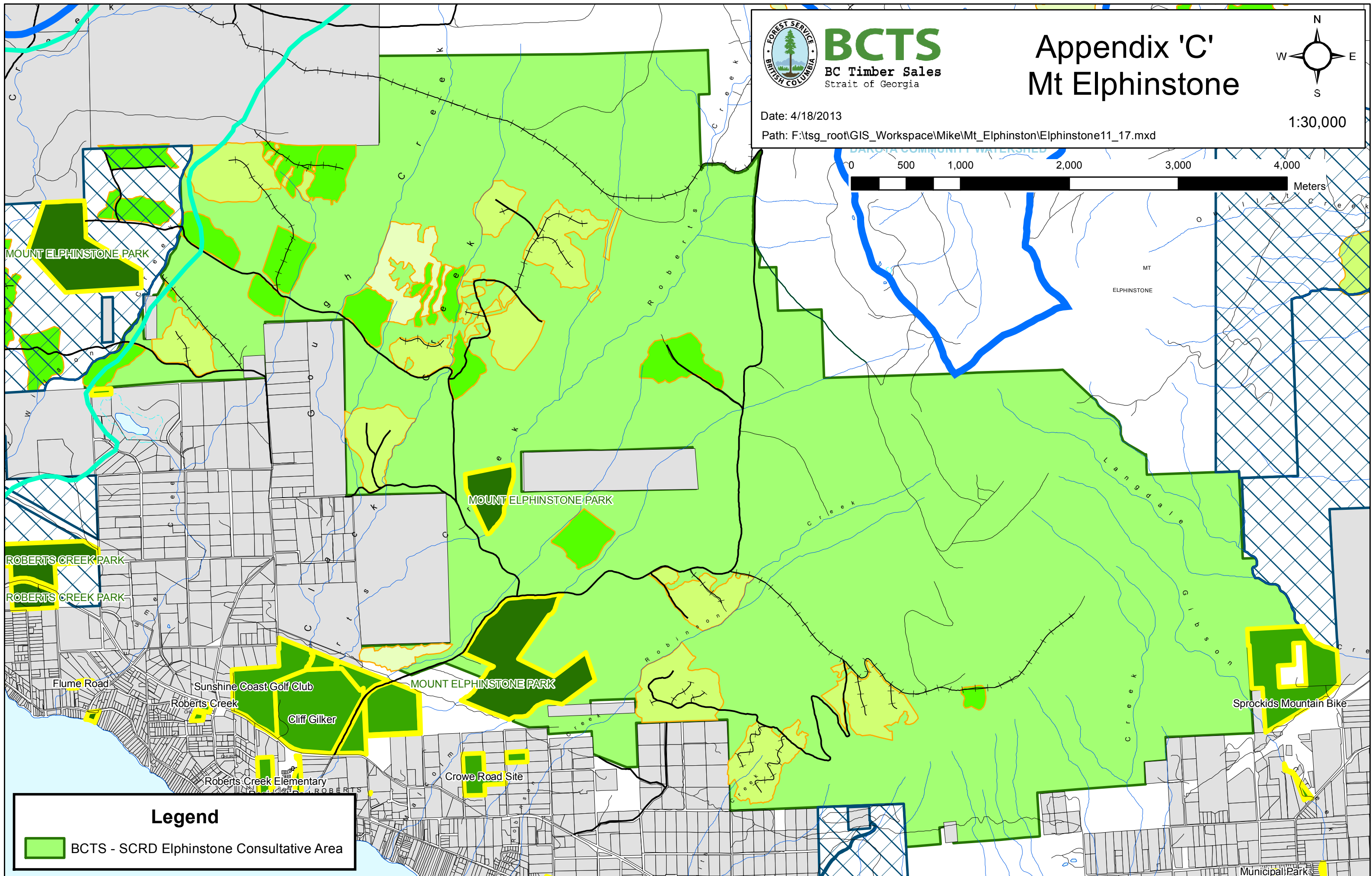
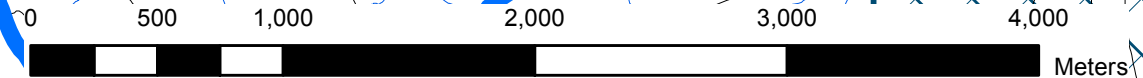
Appendix 'C' Mt Elphinstone



Date: 4/18/2013

Path: F:\tsg_root\GIS_Workspace\Mike\Mt_Elphinston\Elphinstone11_17.mxd

1:30,000



Legend

 BCTS - SCRD Elphinstone Consultative Area