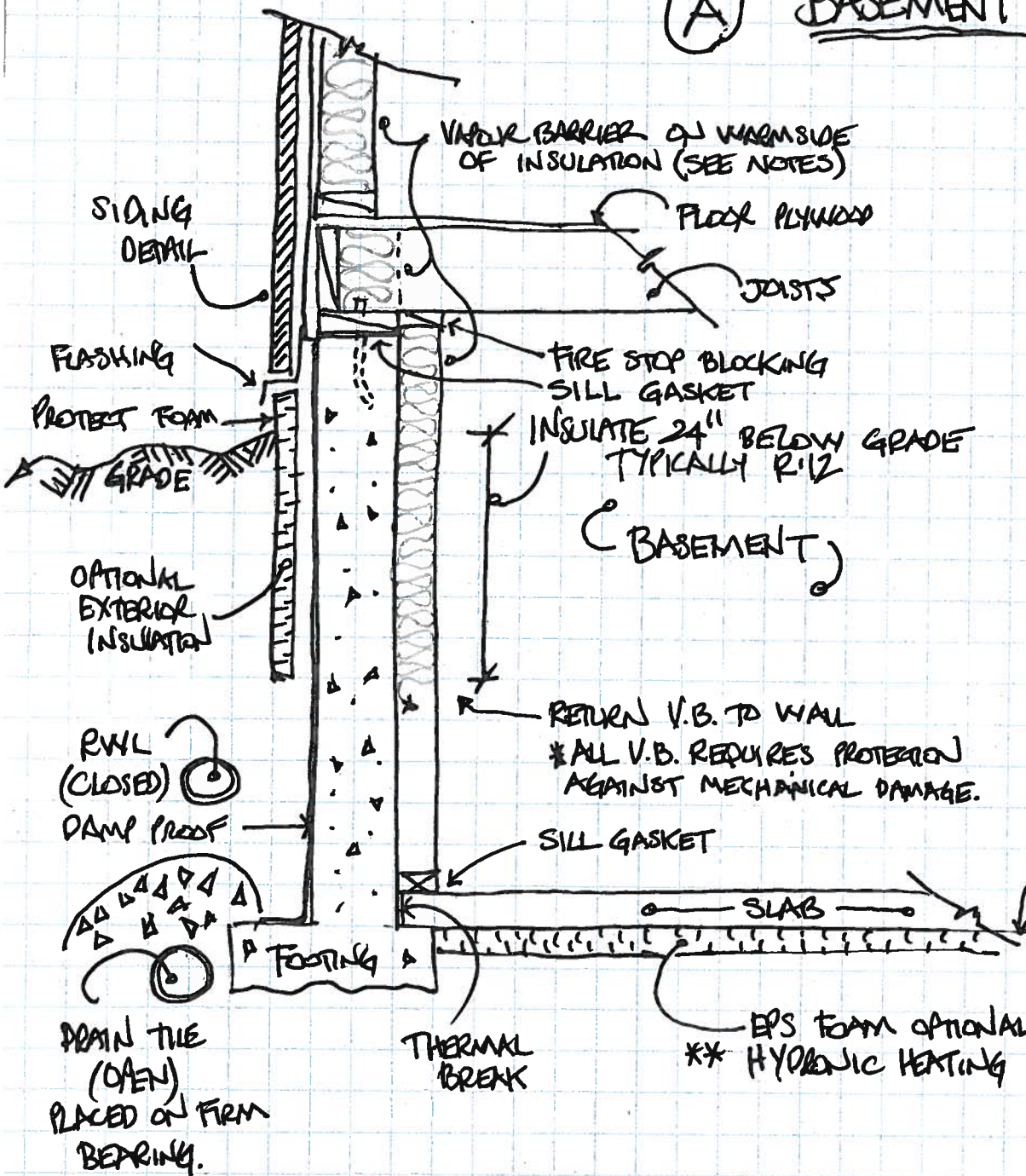


(A) BASEMENT WALL INSULATION (MINIMUM REQ.)

CONCRETE

AUG-2012



NOTES:

- * KEEP GRADE 8" BELOW SIDING
- * GRADE AWAY FROM BUILDING.
- * INSURE TO CODE MINIMUMS
- * ALWAYS DISCUSS INSULATION AND VAPOUR-BARRIER PLANS WITH BUILDING INSPECTOR FIRST.
- * 6" MINIMUM COVER GRAVEL ON DRAIN TILE.
- * RWL MUST BE TIGHT GLUED PIPE.
- * DAMP PROOFING EXTERIOR OF CONCRETE IS REQUIRED BEFORE BACKFILLING.
- * EXTENDING INSULATION TO FLOOR IS OPTIONAL
- * INSULATION OF EXTERIOR WALL IS OPTIONAL
- * SEAL SLAB TO WALL FOR SOIL GASSES
- * STAY 1/2" CLEAR OF INSIDE CONCRETE WALL WITH FRAMING.

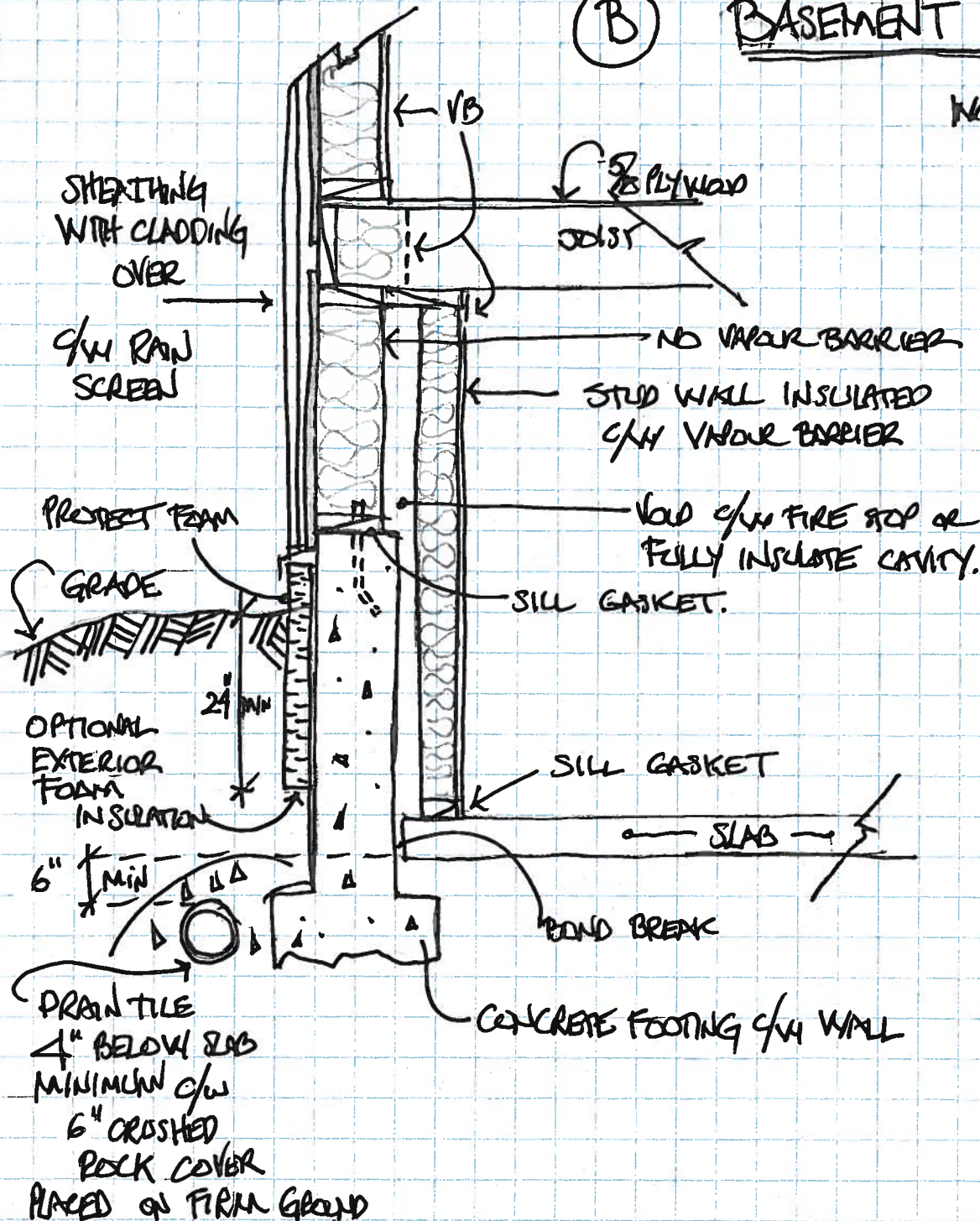
SUNSHINE COAST REGIONAL DISTRICT
FOR INFORMATION ONLY

(B)

BASEMENT INSULATION COMBINATION WALL

WOOD/CONCRETE

AUG-2012



NOTES:

- * INSULATE AT LEAST TO CODE MINIMUMS
- * CHECK WITH BUILDING INSPECTOR REGARDING CLADDING AND INSULATION DETAILS PRIOR TO INSTALL.
- * CONCRETE DAMPROOFED ON EXTERIOR
- * DRAIN TILE TOP AT LEAST 4" TO UNDERSIDE OF SLAB ELEVATION
- * STAY 1/2" MINIMUM FROM CONCRETE WITH INSIDE STUD FRAMING.
- * SLOPE GRADE AWAY FROM FOUNDATION
- * PROTECT EXTERIOR FOAM INSULATION WITH FLASHING OR MILL BOARD.
- * PROTECT INTERIOR V.B. FROM MECHANICAL DAMAGE WITH DRYWALL OR PLYWOOD PANELLING.

SUNSHINE COAST REGIONAL DISTRICT
FOR INFORMATION ONLY