



News Release

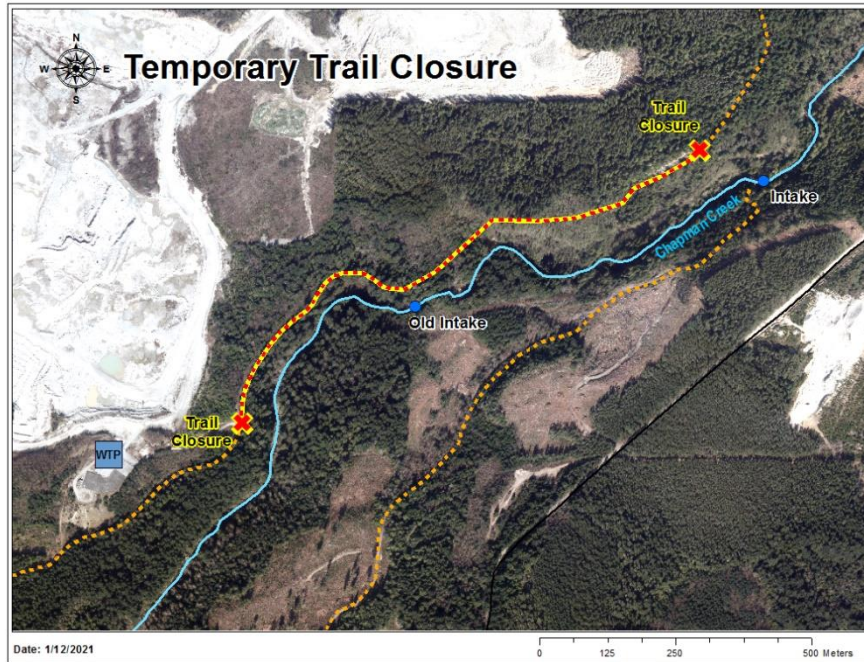
Trail Closure Continues at Chapman Creek Water Treatment Plant

Sechelt, BC – February 11, 2021 – Work to secure vital water mains at the Chapman Creek Water Treatment Plant is continuing and today, the SCR D is providing an update on the trail closure that was [first communicated in mid-January](#).

This work taking place in the area is necessary due to a landslide that occurred in late December. In the past month, SCR D Infrastructure Services staff, along with contractors have been placing anchors and two beams in the area which will be used to support two water mains from Chapman Creek Water Treatment Plant.



Due to the complex nature of the excavation work now being completed and the heavy machinery that is in the area, the trail and access areas outlined below continue to be closed to the public for safety reasons.



The SCRD will continue to provide updates on the work and the status of the water mains to residents via social media and on the SCRD website.

-30-

Media enquiries contact:

Remko Rosenboom
General Manager, Infrastructure Services
Sunshine Coast Regional District
Phone: 604-885-6800
Email: remko.rosenboom@scrd.ca