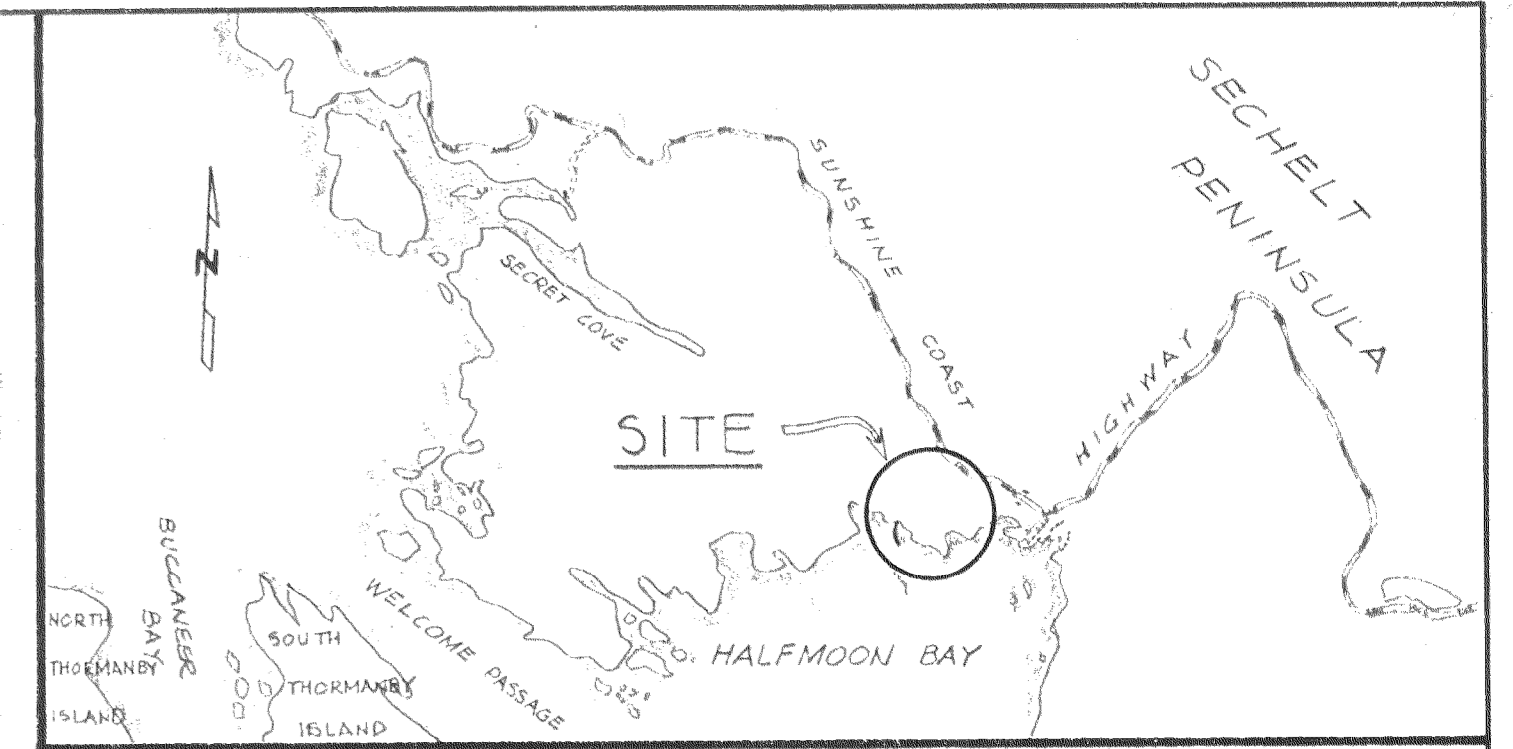
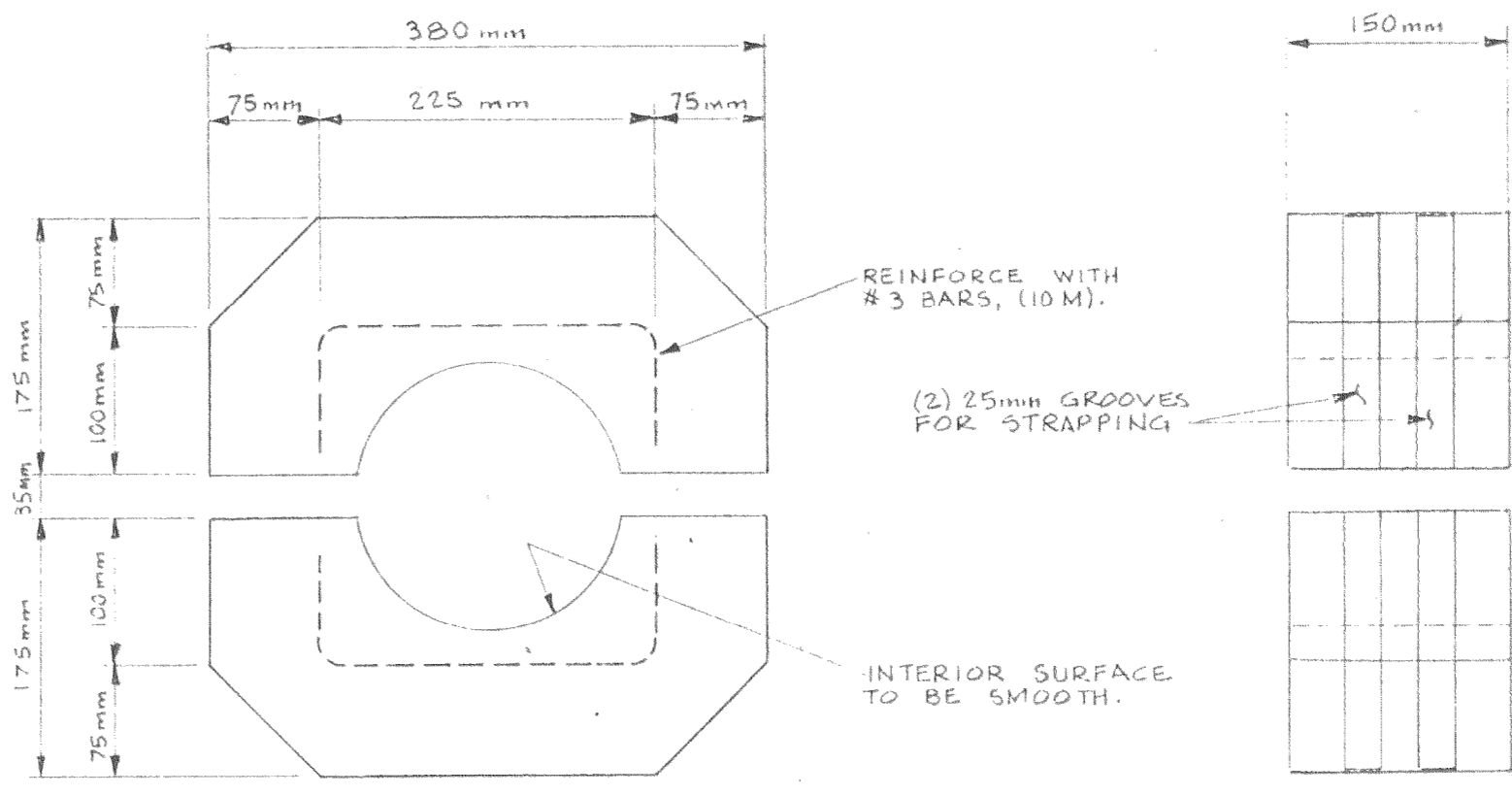


~HALFMOON BAY~



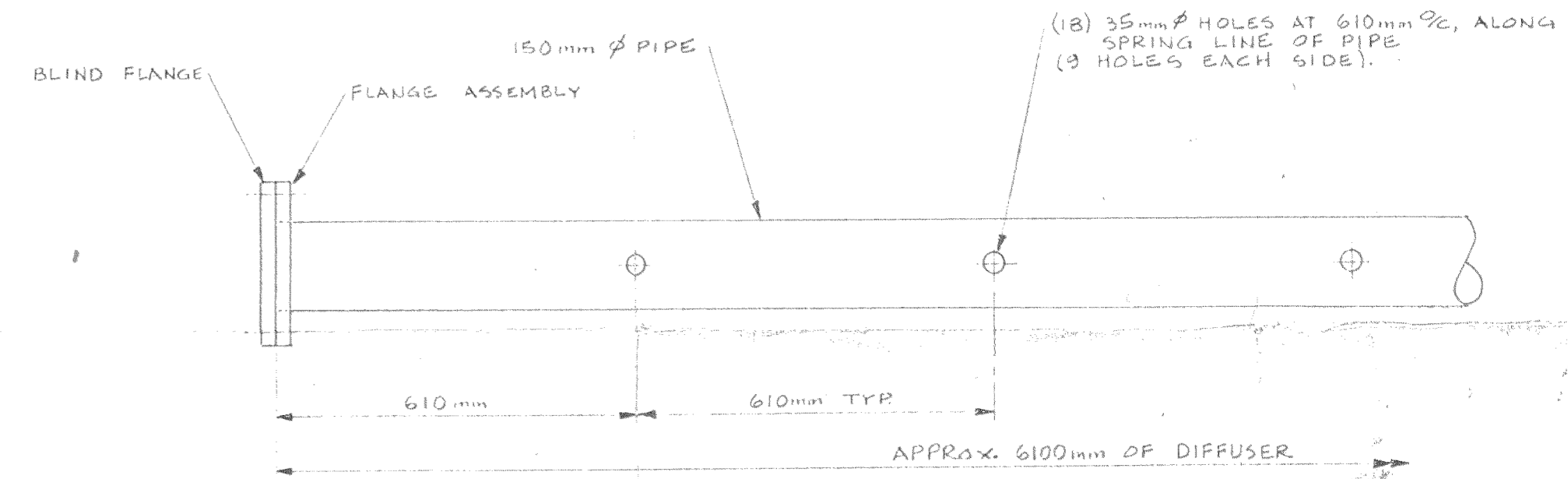
SITE LOCATION MAP

TOPOGRAPHIC CHART NO. 92 07/2
1000 500 0 1000 2000 METERS



CONCRETE WEIGHT DETAIL 'B'

- 1:50
- *NOTES: 1. WRAP PIPE WITH 6mm RED RUBBER SHEET (MIN. WIDTH 200mm) TO PREVENT CONTACT BETWEEN CONCRETE & PIPE.
 - 2. CONCRETE TO BE 20 MPa AT 28 DAYS.
 - 3. MINIMUM WEIGHT OF EACH BLOCK SHALL BE 24.0 kg.
 - 4. BLOCKS TO BE CAST WITH 25mm WIDE GROOVES TO HOLD STRAPPING IN PLACE.
 - 5. NYLON STRAPPING AND FASTENERS SHALL BE USED TO BIND HALVES OF CONCRETE WEIGHTS TOGETHER.

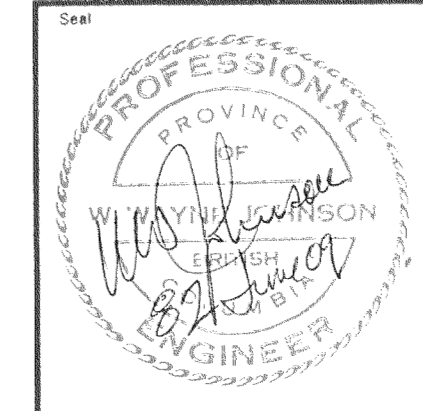


DIFFUSER - DETAIL 'A'

GENERAL NOTES:

1. ELEVATIONS ARE BASED ON AN ASSUMED DATUM FROM WORK DONE BY ROBERT ALLEN, B.C.L.S., EL. 0.0m = HIGH WATER MARK.
2. OUTFALL PIPE TO BE 'SCLAIRPIPE' SERIES 60 AS SUPPLIED BY DUPONT.
3. DURING INSTALLATION, CHECK BEDDING OF PIPE TO ENSURE THAT NO SHARP EDGES CONTACT WITH PIPE.
4. PROVIDE RIPRAP AND/OR CONCRETE FILLED SAND BAGS FOR PROTECTION OF PIPE ABOVE LOW WATER MARK.

Drawn	Date	REVISION	Check	Appr.
Halcrow Engineering Consultants Ltd. 1520 Pemberton Avenue North Vancouver, B.C. V7P 2S2 Telephone (604) 988-6141				
Client		HALFMOON BAY PROPERTIES LTD.		File H.17
				Scale AS NOTED
				Designed W.W.J. 02-June
				Drawn J.S.F. 10/20
				Checked W.W.J. 02-June-98
				Approved
				Drawing Number
				Revision
				H.17.6.



PROFILE
HORIZ. 1:1000, VERT. 1:200

DISCHARGE POINT
EL. -5.1m